

TECHNICAL MANUAL  
OPERATOR, ORGANIZATIONAL, DIRECT SUPPORT  
AND GENERAL SUPPORT MAINTENANCE  
MANUAL INCLUDING REPAIR PARTS LIST  
FOR

SHOP EQUIPMENT  
ELECTRICAL REPAIR SEMITRAILER MOUNTED

MODEL: SELR

(4940-01-096-4475)

SOUTHWEST TRUCK BODY COMPANY

200 SIDNEY STREET

ST. LOUIS, MISSOURI 63104



TECHNICAL MANUAL }  
NO 9-4940-546-14&P }

HEADQUARTERS  
DEPARTMENT OF THE ARMY  
Washington, DC, 17 June 1982

OPERATOR'S, ORGANIZATIONAL, DIRECT SUPPORT AND  
GENERAL SUPPORT MAINTENANCE MANUAL  
INCLUDING REPAIR PARTS LIST  
FOR  
  
SHOP EQUIPMENT  
ELECTRICAL REPAIR SEMITRAILER MOUNTED  
MODEL SELR  
(4940-02-096-4475)

**REPORTING OF ERRORS**

You can help improve this manual. If you find any mistakes or if you know of away to improve the procedures, please let us know. Mail your letter, DA Form 2028 (Recommended Changes to Publications and Blank Forms), or DA Form 2028-2, located in the back of this manual direct to: Commander, US Army Armament Materiel Readiness Command, ATTN: DRSAR-MAS, Rock Island, IL 61299. A reply will be furnished directly to you.

**NOTE**

This manual is published for the urpose of identifying an authorized commercial manual for the use of the personnel to whom this equipment is issued.

Manufactured by: Southwest Truck Body Company  
200 Sidney Street  
St. Louis, Missouri 63104

Procured under  
Contract No. DAAA09-78-C-2113

This technical manual is an authentication of the manufacturers' commercial literature and does not conform with the format and content specified m AR 310-3, Military Publications. This technical manual does, however, contain available information that is essential to the operation and maintenance of the equipment.

**LIST OF ILLUSTRATIONS**

Figure No.	Title	Page No.
1.	Workbench Wiring Diagram .....	1-2
2.	Wiring Diagram .....	*
3.	Major Component Location .....	1-4
4.	Battery Charger and Machinist Vise .....	3-2
5.	Utility Grinding Machine, Workbench, Panel Assembly .....	3-4
6.	Disconnecting Conduit Box, and Removing Utility Grinding Machine .....	3-4
7.	Stools and Pails .....	3-5
8.	Small Parts Cabinet .....	3-6
9.	Electrical Power Test Sets .....	3-7
10.	Workbench Equipment Stowage .....	3-9
11.	Power Supply Amplifier and Oscillator .....	3-11
12.	Armature Undercutter .....	3-12
13.	Test Set, Low Voltage Circuit, and Pen Recorders .....	3-14
14.	Actuator Test Stand .....	3-15
15.	Bolt Cutter, Broom, First Aid Kit, and Fire Extinguisher .....	3-17
16.	Portable Hoist Trestle .....	3-18
17.	Left and Right Side Workbench .....	3-21
18.	Platform Assembly Installation .....	3-23
19.	Platform Assembly Modification .....	3-25
20.	Generator Exhaust Installation .....	3-27
21.	Power Supply Installation .....	3-29
22.	Panel Stowage Assembly .....	3-31
23.	Front Workbench .....	3-33
24.	Data Plates .....	3-35
25.	Distribution Panel .....	3-38
26.	Distribution Panel Conduit .....	3-39
27.	Front Workbench Conduit and Receptacle .....	3-40
28.	Left Side Workbench Conduit .....	3-41
29.	Right Side Workbench Conduit .....	3-42
30.	Contents Locaton Diagram .....	4-2

\* Figure 2 is located in the back of the book.

			Page
CHAPTER	1.	INTRODUCTION . . . . .	1-1
Section	1.	General . . . . .	1-1
	11.	Description and Date. . . . .	1-3
CHAPTER	2.	OPERATING INSTRUCTIONS . . . . .	2-1
Section	3.	MAINTENANCE INSTRUCTIONS . . . . .	3-1
	1.	General . . . . .	3-1
	II.	Maintenance of Shop Set Contents . . . . .	3-2
	III.	Workbenches . . . . .	3-19
	IV.	Equipment Installation . . . . .	3-22
	V.	Panel Storage Assembly . . . . .	3-30
	VI.	Data Plates and Front Workbench . . . . .	3-32
	VII.	Electrical Installation . . . . .	3-36
CHAPTER	4.	CONTENTS OF SHOP EQUIPMENT . . . . .	4-1
APPENDIX		REFERENCES	A-1
INDEX			1-1

## INSTRUCTIONS FOR REQUISITIONING PARTS

### NOT IDENTIFIED BY NSN

When requisitioning parts not identified by National Stock Number, it is mandatory that the following information be furnished the supply officer.

- 1 - Manufacturer's Federal Supply Code Number. 98255
- 2 - Manufacturer's Part Number exactly as listed herein,
- 3 - Nomenclature exactly as listed herein, including dimensions, if necessary.
- 4 - Manufacturer's Model Number. SELR
- 5 - Manufacturer's Serial Number (End Item).
- 6 - Any other information such as Type, Frame Number, and Electrical Characteristics, if applicable.
- 7 - If DD Form 1348 is used, fill in all blocks except 4, 5, 6, and Remarks field in accordance with AR 725-50.

Complete Form as Follows:

- (a) In blocks 4, 5, 6, list manufacturer's Federal Supply Code Number -98255 followed by a colon and manufacturer's Part Number for the repair part.
- (b) Complete Remarks field as follows:  
Noun: (nomenclature or repair part)  
For: NSN: 4940-01-096-4475  
Manufacturer: Southwest Truck Body Company  
200 Sidney Street  
Model: SELR St. Louis, Missouri 63104  
Serial: (of end item)

Any other pertinent information such as Frame Number, Type, Dimensions, etc.

# CHAPTER 1

## INTRODUCTION

### Section I. GENERAL

---

#### 1-1. SCOPE.

a. This manual is published for the use of the personnel to whom the Southwest. Truck Body Model SELR, Shop Equipment is issued.

b. The manual provides information related to the contents of the shop equipment and the wiring diagrams (fig. 1 & 2). For operating and maintenance instructions pertaining to the trailer and components other than the shop set contents covered in this publication, refer to Appendix "A" References.

1-2. MAINTENANCE FORMS AND RECORDS. Equipment maintenance forms and procedures for their use are contained in TM 38-750, The Army Maintenance Management System (TAMMS).

1-3. ADMINISTRATIVE STORAGE. For information necessary to meet Administrative Storage Requirements, refer to TM 740-90-1.

1-4. EQUIPMENT SERVICEABILITY CRITERIA (ESC). There are no Equipment Serviceability Criteria (ESC) technical manuals in existence pertinent to the end item of equipment being covered in this publication.

1-5. DESTRUCTION OF ARMY MATERIEL TO PREVENT ENEMY USE. For procedures required to render this end item unusable by the enemy, refer to TM 750-244-3.

#### 1-6. QUALITY ASSURANCE/QUALITY CONTROL (QA/QC).

a. Refer to MIL-STD-109 and MIL-M-38784 for QA/QC terms and definitions.

b. Refer to Technical Manual TM 9-2330-238-14&P and DMWR 9-4940-451 for the applicable QA/QC requirements.

1-7. REPORTING QUALITY DEFICIENCY REPORTS (QDR). QDR's will be prepared on SF 368, Quality Deficiency Report. Instructions for preparing QDR's are provided in TM 38-750, The Army Maintenance Management System. QDR's should be mailed directly to Commander, USA Armament Materiel Readiness Command, ATTN: DRSAR-MAO, Rock Island, IL 61299. A reply will be furnished directly to you.

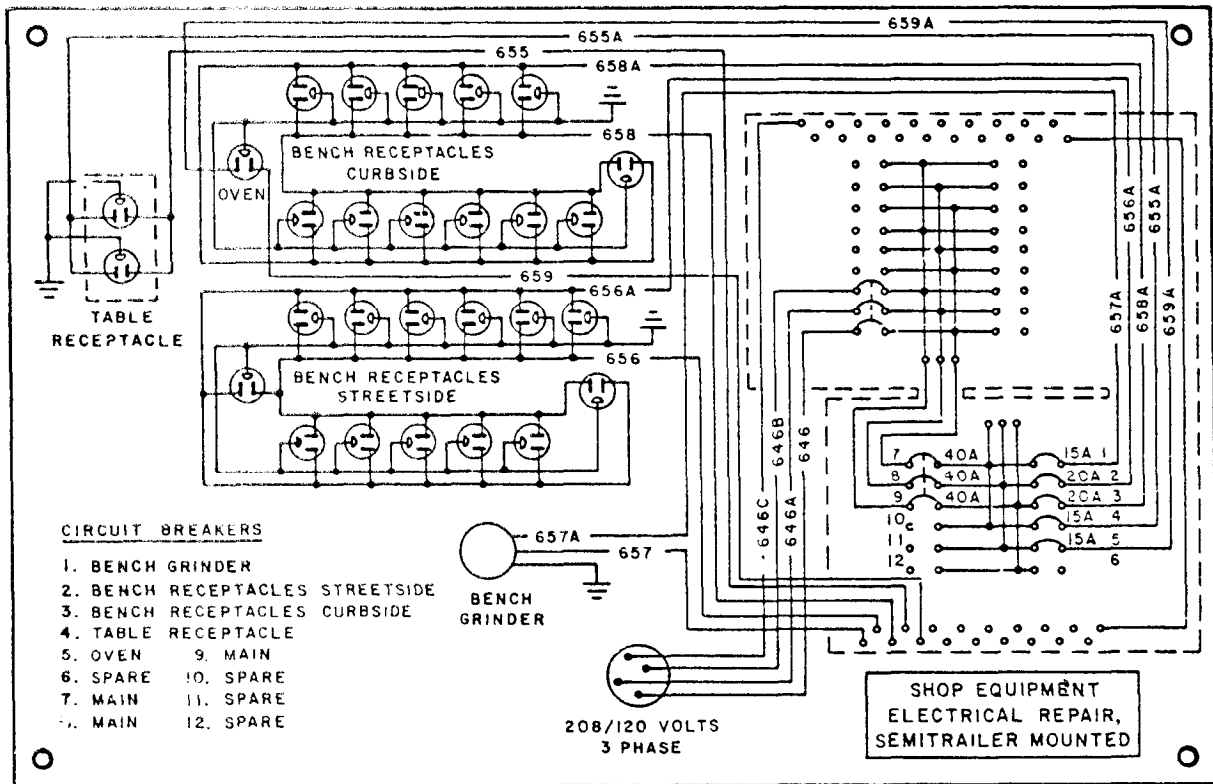


Figure 1. Workbench Wiring Diagram.

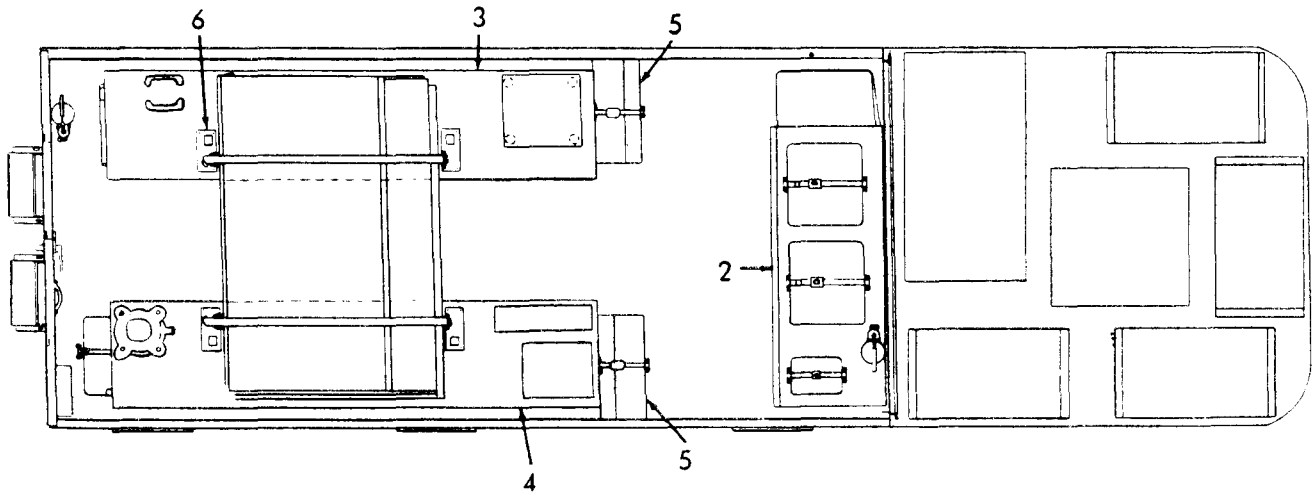
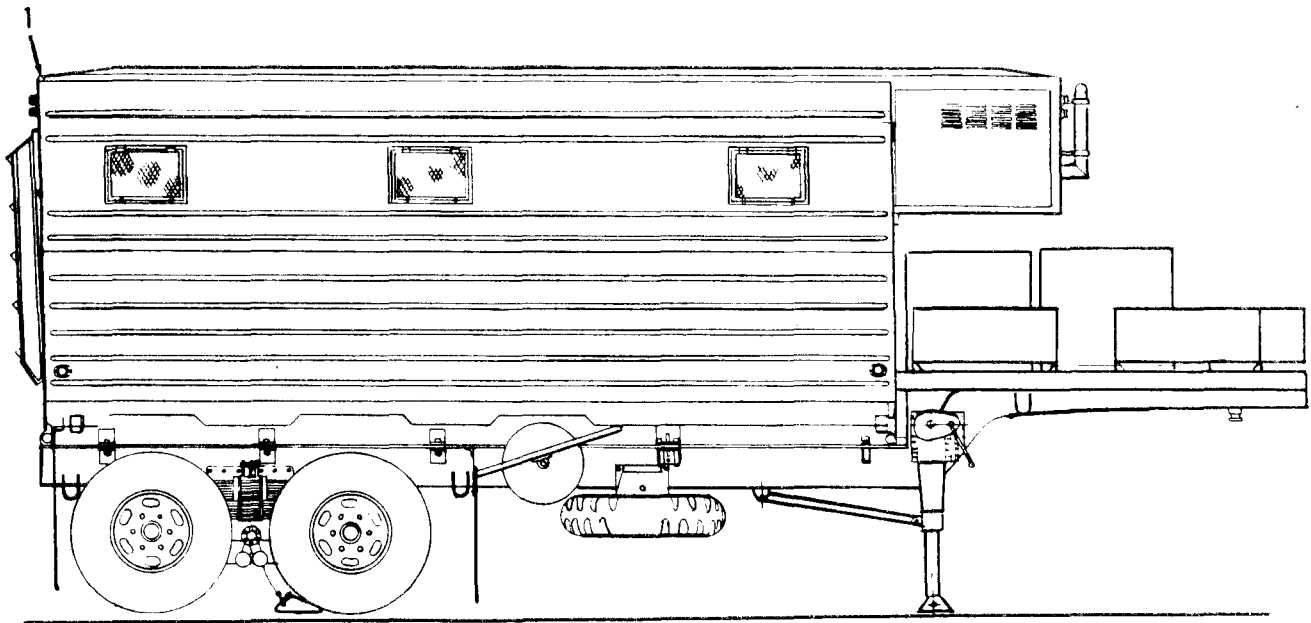


Section II. DESCRIPTION AND DATA

1-8. DESCRIPTION.

- a. For description of the semitrailer van, refer to TM 9-2330-238-14&P.
- b. For major component location on shop set van, refer to figure 3
- c. Identification Plate. The U.S. Army Identification Plate is located on the right rear panel of the van body. It contains information listed below:

Stock No. -----	4940-01-096-4475
Ser. No. -----	
Mfg. -----	Southwest Truck Body
Model -----	SELR
Contract No. -----	DAAA09-78-C-2113
Length -----	323
Width -----	94.5
Height -----	134
G.V.W. -----	
Ship Wt. -----	
Cube -----	2,366 ft.



ITEM	NAME	QTY	PART NUMBER	(FSCM)
1	Semitrailer	1	13217E8100	(19204)
2	Workbench, Front	1	13217E8118	(19204)
3	Workbench, Left Side	1	13217E8106-2	(19204)
4	Workbench, Right Side	1	13217E8106-1	(19204)
5	Equipment Installation	1	11021011	(19204)
6	Stowage Assembly	1	11021003	(19204)

Figure 3. Major Component Location

**CHAPTER 2**  
**OPERATING INSTRUCTIONS**

---

**NOTE**

Basically, TM 9-4940-546-14&P covers the operating and maintenance instruction of the Shop Equipment and Electrical Repair.

Lubrication Instructions, Preventive Maintenance, and Troubleshooting are contained in TM 9-2330-238-14&P.



## CHAPTER 3

### MAINTENANCE INSTRUCTIONS

---

#### Section I. GENERAL

3-1. REFERENCE INSTRUCTIONS. Refer to TM 9-2330-238-14&P for instructions pertaining to service upon receipt of equipment, movement to a new worksite, repair parts (special tools and equipment), and lubrication instructions for the shop sets. Refer to Appendix A for instruction manuals.

3-2. REPAIR PARTS. In addition to the above, repair parts not covered in TM 9-2330-238-14&P, are contained in this manual. When requisitioning parts not identified by National Stock Number, it is mandatory that the following information be furnished the Supply Officer:

- a. Manufacturer's Federal Supply Code Number (FSCM).
- b. Manufacturer's Part Number exactly as listed herein.
- c. Nomenclature exactly as listed herein, including dimensions, if necessary.
- d. Manufacturer's Model Number.
- e. Manufacturer's Serial Number (End Item).
- f. Any other information, such as Type, Frame Number, and Electrical Characteristics, if applicable.

9. If DD Form 1348 is used, fill in all blocks except 4, 5, 6 and Remarks field in accordance with AR 725-50.

Complete Form as Follows:

(1) In blocks 4, 5, 6 list manufacturer's Federal Supply Code Number, followed by a colon and manufacturer's Part Number for the repair part.

(2) Complete Remarks field as follows:

Noun: (nomenclature of repair part)  
For: NSN :  
Manufacturer:  
Model:  
Serial: (of end item)

Any other pertinent information such as Frame Number, Type, Dimensions, etc.

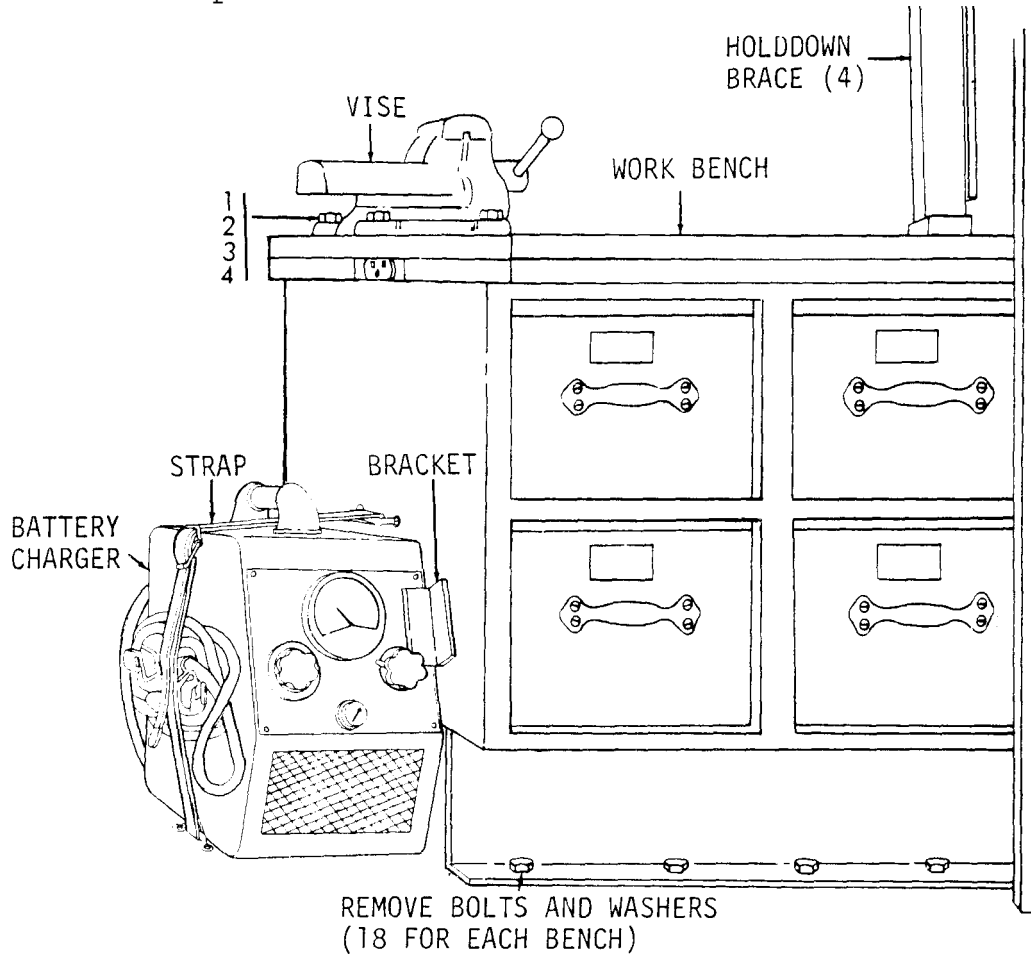
Section II. MAINTENANCE OF SHOP SET CONTENTS

3-3. BATTERY CHARGER.

a. General. The charger is located at the rear of the right side workbench (on the floor).

b. Removal. Refer to figure 4 and unfasten straps and remove battery charger.

c. Installation. Refer to figure 4 and install battery charger and secure straps.



ITEM	NAME	QTY	PART NUMBER	(FSCM)
1	Screw	4	MS90725-171	(96906)
2	Washer	4	MS27187-21	(96906)
3	Washer	4	MS35338-50	(96906)
4	Nut	4	MS51967-20	(96906)

Figure 4. Battery Charger and Machinist Vise.

### 3-4. MACHINIST VISE.

a. General. The vise is located on top of the right side workbench above the battery charger.

b. Removal (fig. 4).

(1) Remove drawer number 13.

(2) Remove four nuts (4), four flatwashers (2), four lockwashers (3) and four screws (1).

(3) Remove vise.

c. Installation. Install in reverse order of b. above.

### 3-5. UTILITY GRINDING MACHINE.

a. General. The grinding machine is located on the rear of the left side workbench.

b. Removal.

(1) Remove drawer number 15 (fig. 5).

(2) Disconnect electrical connection at conduit box (fig. 6).

(3) Remove two nuts (1), two lockwashers (2), two flatwashers (3), and two screws (4) (fig. 6).

(4) Remove grinding machine (fig. 6).

c. Installation. Install in reverse order of b. above.

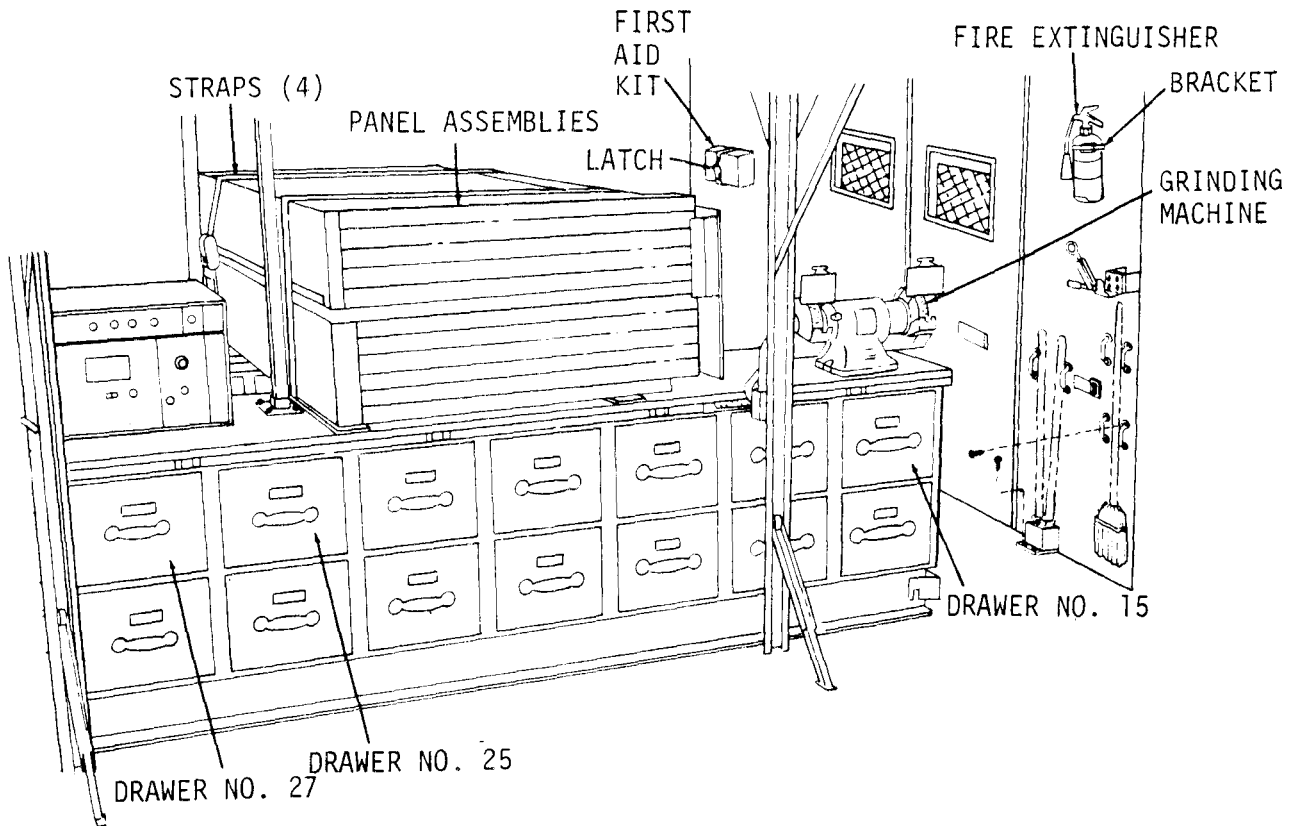


Figure 5. Utility Grinding Machine, Workbench and Panel Assembly.

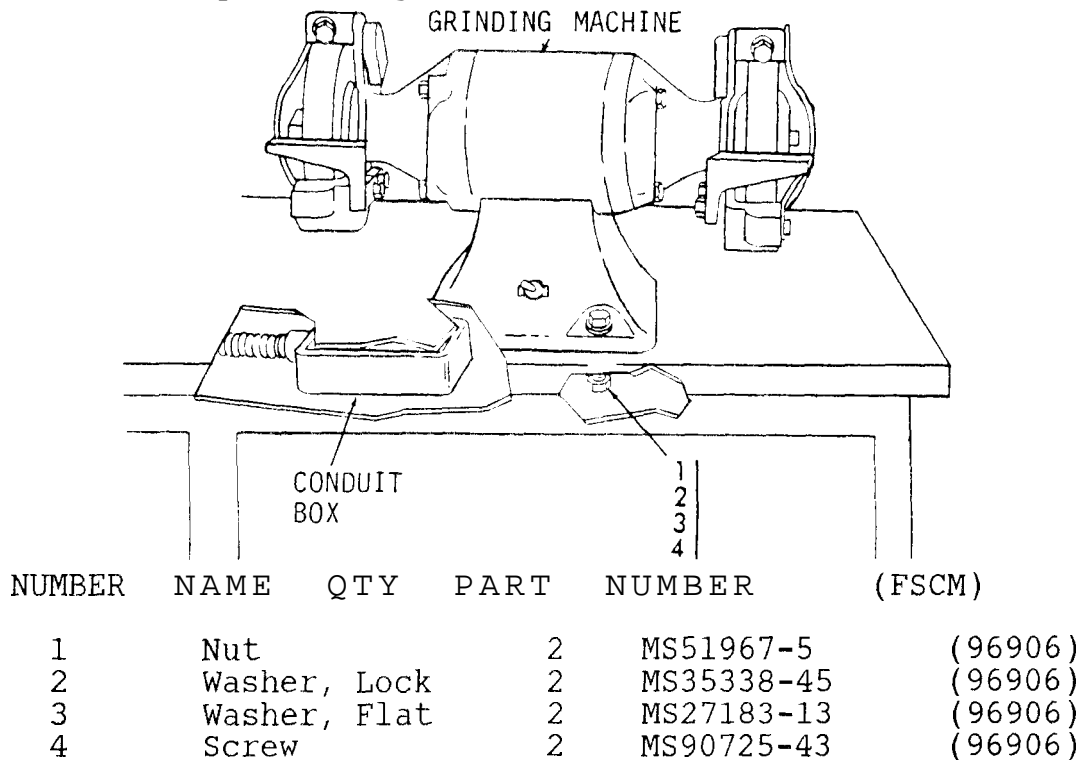


Figure 6. Disconnecting Conduit Box and Removing Utility Grinding Machine.

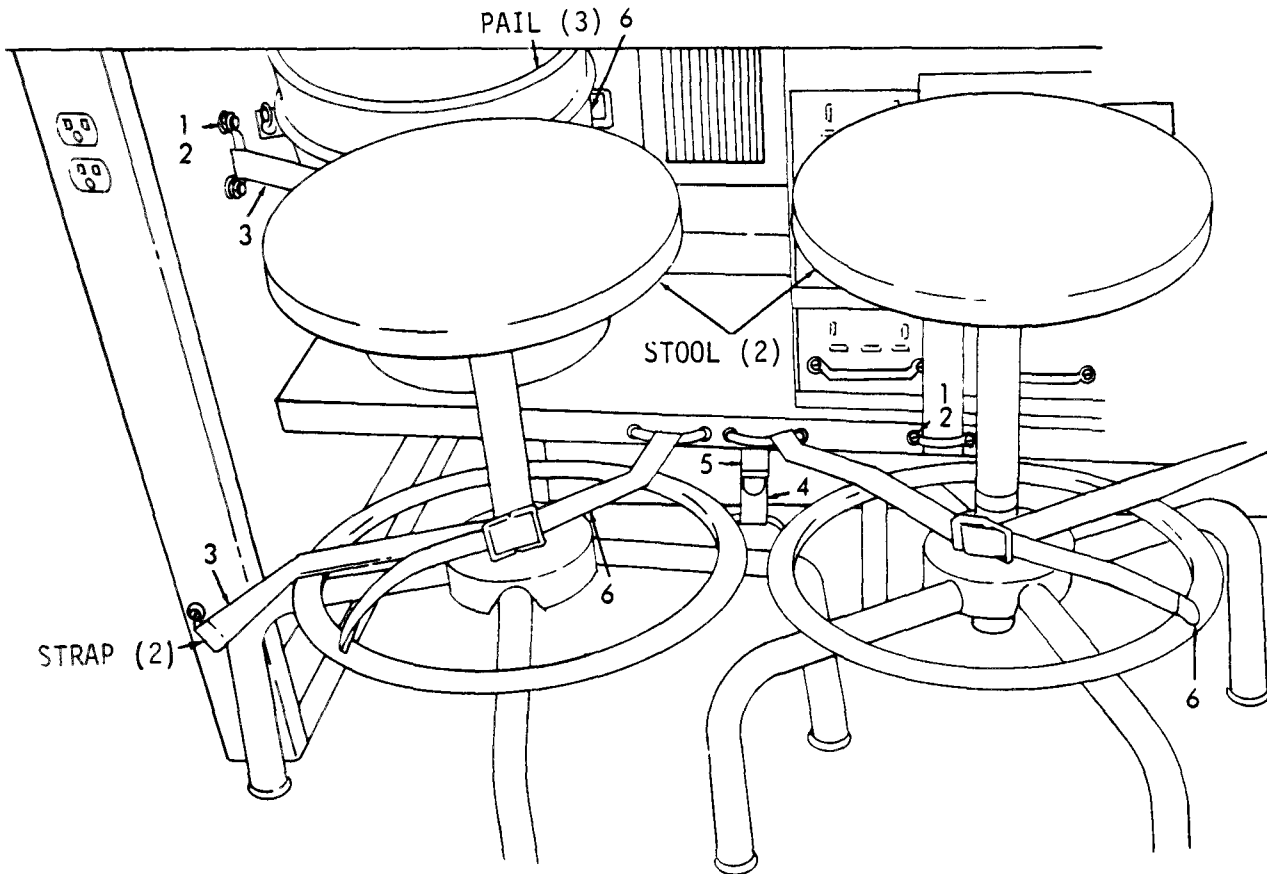


3-6. STOOLS AND PAILS.

General. The two stools and three pails are located under the front workbench.

b. Removal (fig. 7). Unfasten the four straps (3 & 6) and remove the two stools, unfasten two straps (3 & 6) and remove the three pails.

c. Installation. Install in reverse order of removal b. above.



ITEM	NAME	QTY	PART NUMBER	(FSCM)
Screw	Screw	24	MS51861-46	(96906)
Loop	Loop	12	MS51939-1	(96906)
Strap	Strap	3	11020949-5	(19204)
Strap	Strap	2	11020949-2	(19204)
Strap	Strap	2	11020948-5	(19204)
Strap	Strap	3	11020948-8	(19204)

Figure 7. Stools and Pails.

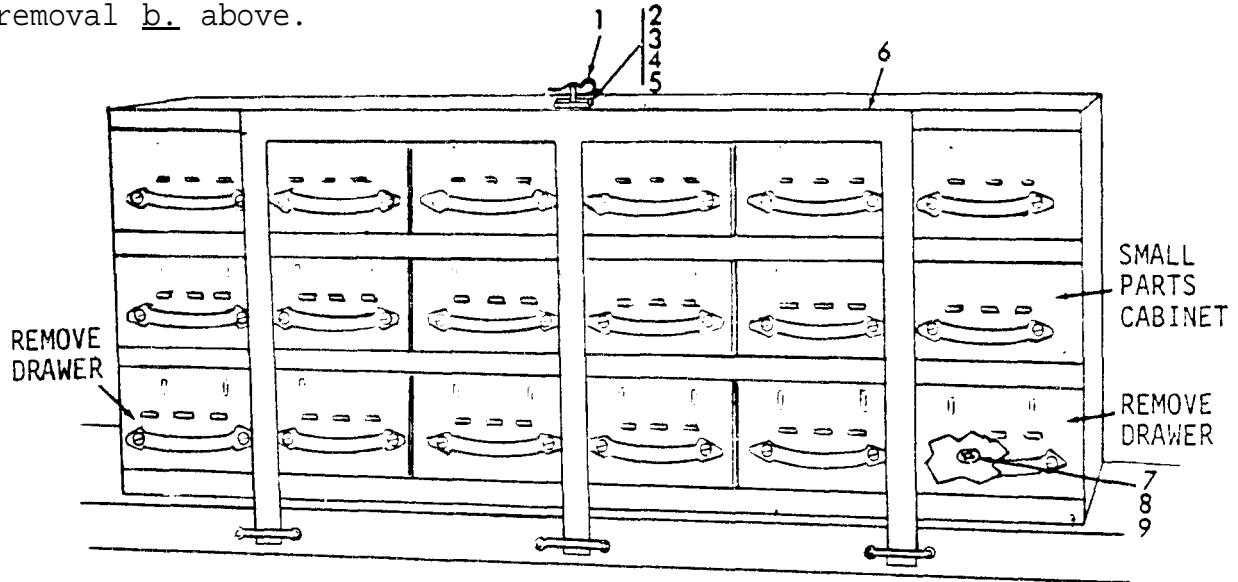
**3-7. SMALL PARTS STORAGE CABINET.**

a. General. The small parts cabinet is located under the front workbench in back of the revolving stools.

b. Removal (fig. 8).

- (1) Remove the two stools (para 3-6).
- (2) Remove the clip (1); then slide the retainer (6) from front of cabinet.
- (3) Remove two bottom drawers (far left and far right).
- (4) Remove four nuts (7), four washers (8) and four screws (9) securing the small parts cabinet to the front workbench.
- (5) Remove the cabinet.

c. Installation. Install the small parts cabinet in reverse order of removal b. above.



TEM	NAME	QTY	PART NUMBER	(FSCM)
1	Clip, Hitchpin	1	11021039	(19204)
2	Plate, Staple	1	11021053	(19204)
3	Screw	4	MS35190-236	(96906)
4	Washer, Lock	4	MS35338-41	(96906)
5	Nut	4	MS35649-262	(96906)
6	Retainer	1	13217E8119	(19204)
7	Screw	4	MS35190-293	(96906)
8	Washer	4	MS35338-44	(96906)
9	Nut	4	MS51967-2	(96906)

Figure 8. Small Parts Cabinet.

3-8. ELECTRICAL POWER TEST SETS.

a. General. The five test sets are mounted on the front of the trailer.

b. Removal (fig. 9).

- (1) Unscrew the two chain and bolt assemblies (8) on four power test sets (5).
- (2) Remove two screws and a retainer plate from the rear of each test set.
- (3) Using a suitable lifting device, slide power test set (5) from frame mounts and off the trailer.
- (4) Remove eight nuts, eight washers, eight screws and remove 60 KW power test set.

c. Installation. Install the five electrical power test sets (5) in reverse order of removal, b. above.

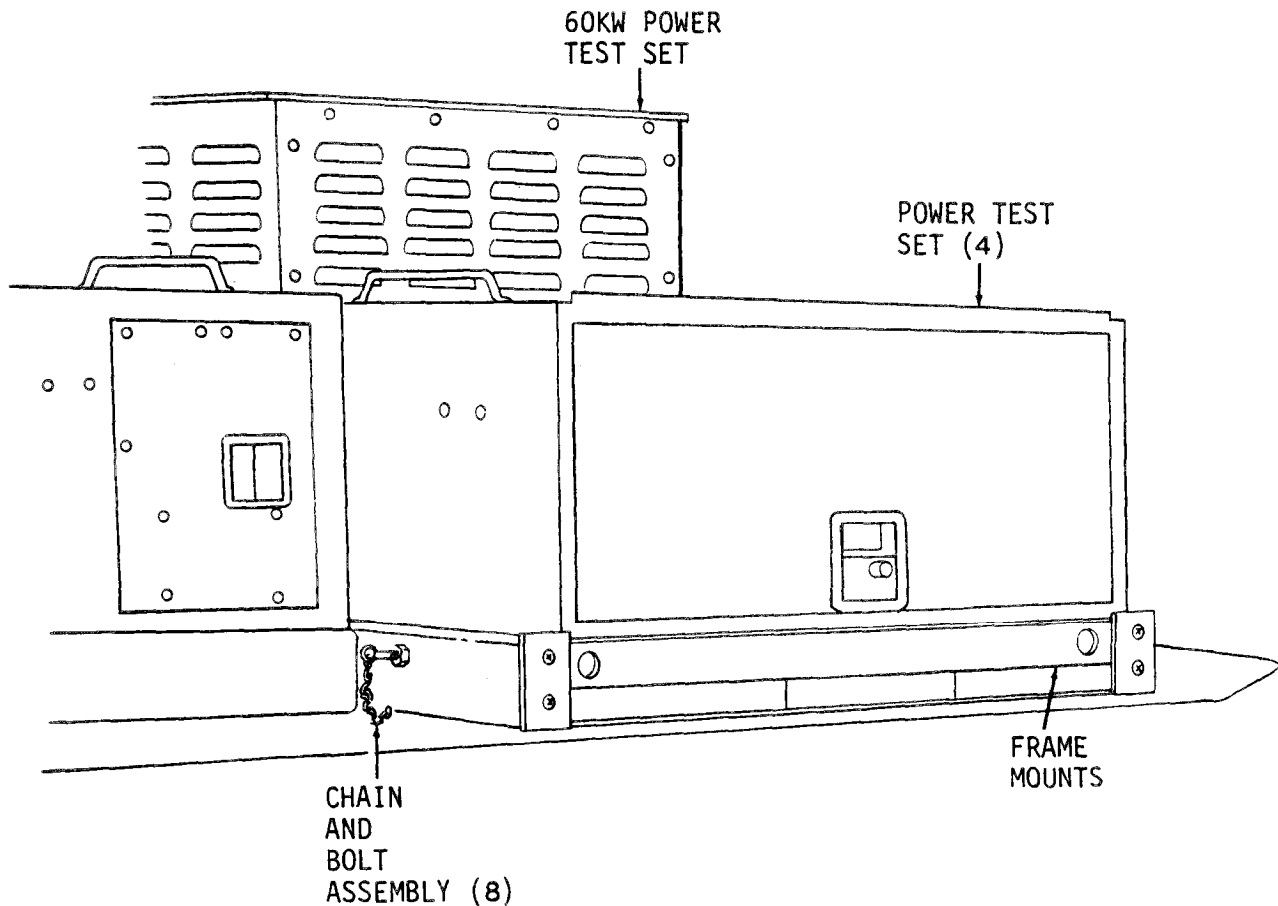


Figure 9. Electrical Power Test Sets.

3-9. THREAD CUTTING TAP SET, ELECTRICAL INSULATION SHEETS, GENERATOR EXHAUST KIT, OVEN MOUNTING HARDWARE, AND GENERATOR MOUNTING HARDWARE.

a. General. The five components are located under the small parts cabinet (under the front workbench).

b. Removal (fig. 7).

(1) Remove the two stools (para 3-6).

(2) Unfasten four straps (4 & 5) and remove the five components.

c. Installation. Install the components under the workbench and secure with four straps (4 & 5).

3-10. PORTABLE TOOL BOX, TORQUE WRENCH, SOCKET WRENCH SET, AND GENERAL MECHANIC'S TOOL KIT.

a. General. The components in this paragraph are located in front of the left and right side workbench.

b. Removal (fig 10).

(1) Unfasten straps (6 & 7) and remove torque wrench and portable tool box.

(2) Unfasten straps (6 & 8) and remove socket wrench set and general mechanic's tool kit.

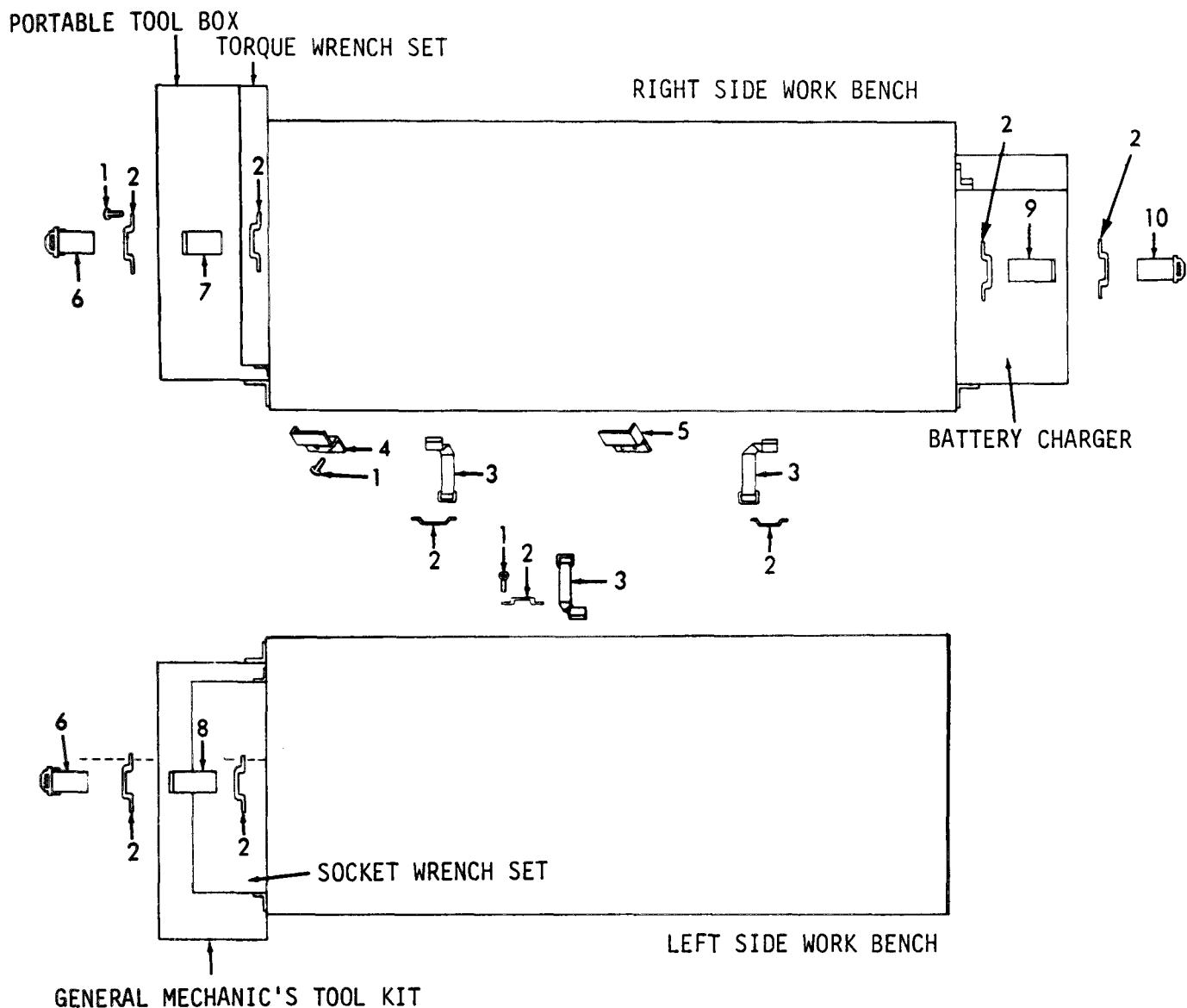
c. Installation. Install in the reverse order of removal b. above.

3-11. CROWBAR, GROUND ROD, AND WRECKING BAR.

a. General. The three components are mounted near the bottom, on the inside, of the workbench. They are secured with mounting straps (one for each).

b. Removal (fig. 10). Unfasten the three straps and remove the three components.

c. Installation. Install the three components in reverse order of removal b. above.



ITEM	NAME	QTY	PART NUMBER	(FSCM)
1	Screw	22	MS51861-46	(96906)
2	Loop	9	MS51939-1	(96906)
3	Strap	3	11020947-3	(19204)
4	Bracket	1	11021005-1	(19204)
5	Bracket	1	11021005-2	(19204)
6	Strap	2	11020949-2	(19204)
7	Strap	1	11020948-15	(19204)
8	Strap	1	11020948-11	(19204)
9	Strap	1	11020948-8	(19204)
10	Strap	1	11020949-5	(19204)

Figure 10. Workbench Equipment Stowage.

3-12. FIRE EXTINGUISHER AND BRACKET.

a. General. The fire extinguisher is mounted on the wall at the rear of the van.

b. Removal (fig. 5).

(1) Release the latch and remove the fire extinguisher.

(2) Remove mounting hardware and bracket.

c. Installation. Install the fire extinguisher and bracket in reverse order of removal, b. above.

3-13. FIRST AID KIT.

General. The first aid kit is mounted on the wall in back of the right side workbench.

b. Removal (fig. 5). Release latch and remove the first aid kit.

c. Installation. Install kit in the reverse order of removal, b. above.

3-14. POWER SUPPLY AMPLIFIER AND OSCILLATOR.

a. General. The amplifier assembly is located on top of the left side workbench.

b. Removal.

(1) Remove drawers 25 and 27 from left side workbench (fig. 5).

(2) Remove the four screws and four flatwashers mounting the amplifier to the workbench and remove the amplifier and oscillator assembly (fig. 11).

c. Installation. Install the assembly in the reverse order of removal, b. above.

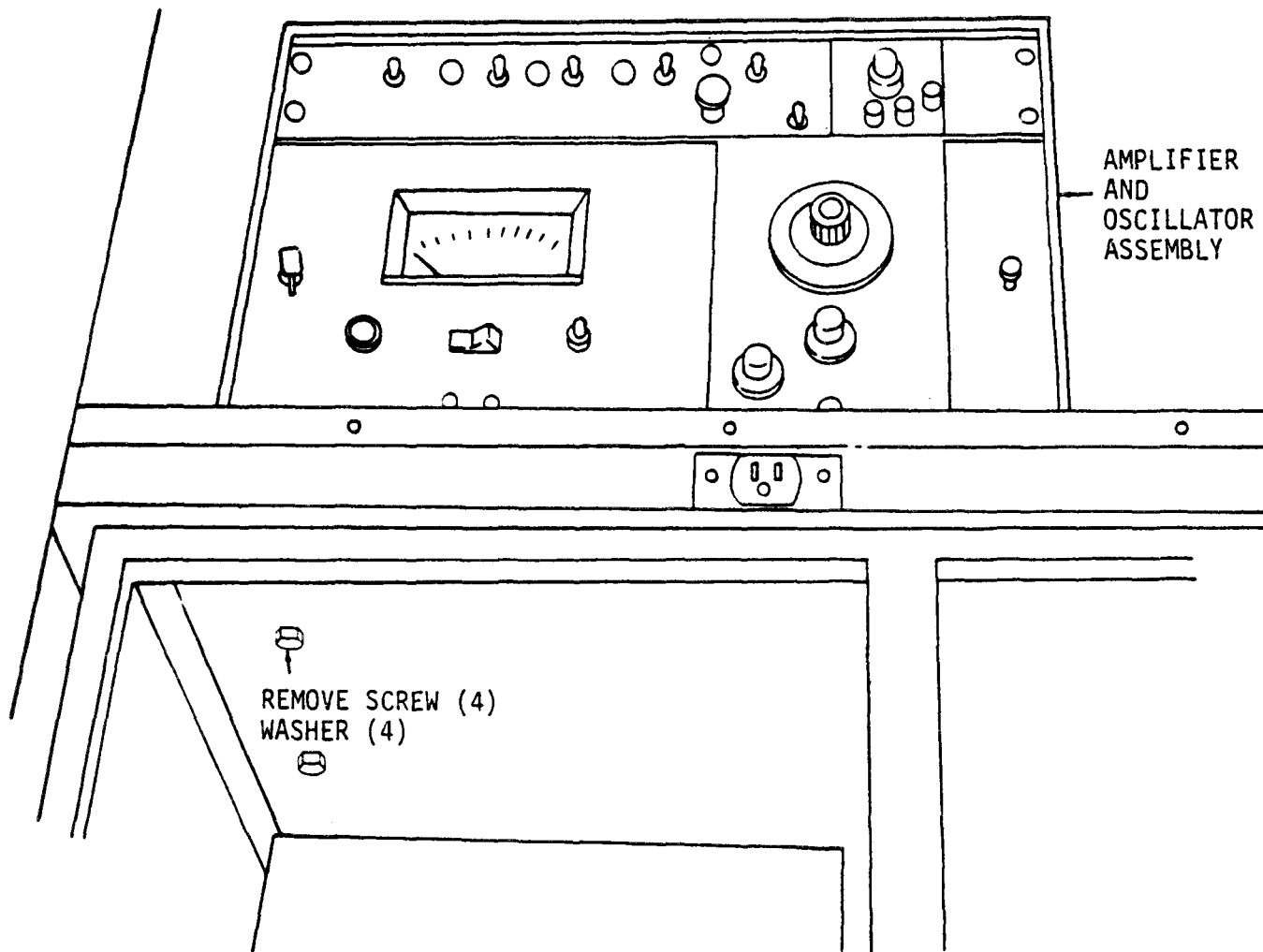


Figure 11. Power Supply Amplifier and Oscillator.

NOTE

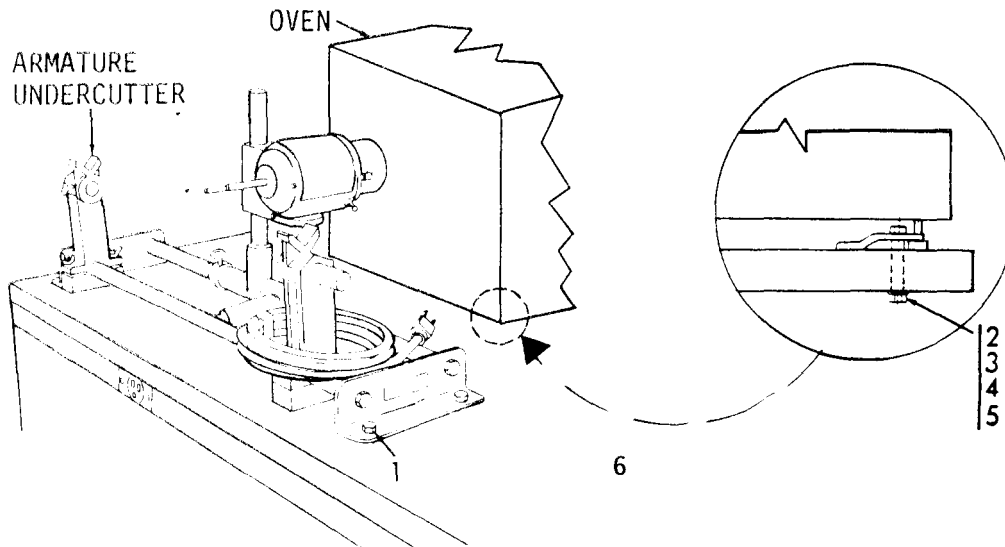
Hardware for mounting the oven is located under front workbench.

- a. General. The oven is located on the front top of the right side workbench.
- b. Removal (fig. 12). Remove four screws (2), four nuts (5), four washers (3) and four clamps (4).
- c. Installation. Install oven in reverse order of removal, b. above.

NOTE

Use only the receptacle on the front of the right side workbench marked:

INDIVIDUALLY PROTECTED  
115 AMP CIRCUIT FOR OVEN



ITEM	NAME	QTY	PART NUMBER	(FSCM)
1	Screw	4	MS51861-70	(96906)
2	Screw	4	MS90725-43	(96906)
3	Washer	4	MS27187-11	(96906)
4	Clamp	4	11021067	(19204)
5	Nut	4	MS51922-9	(96906)
6	Decal, Instruction	1	11021068	(19204)

Figure 12. Armature Undercutter.



3-16. ARMATURE UNDERCUTTER.

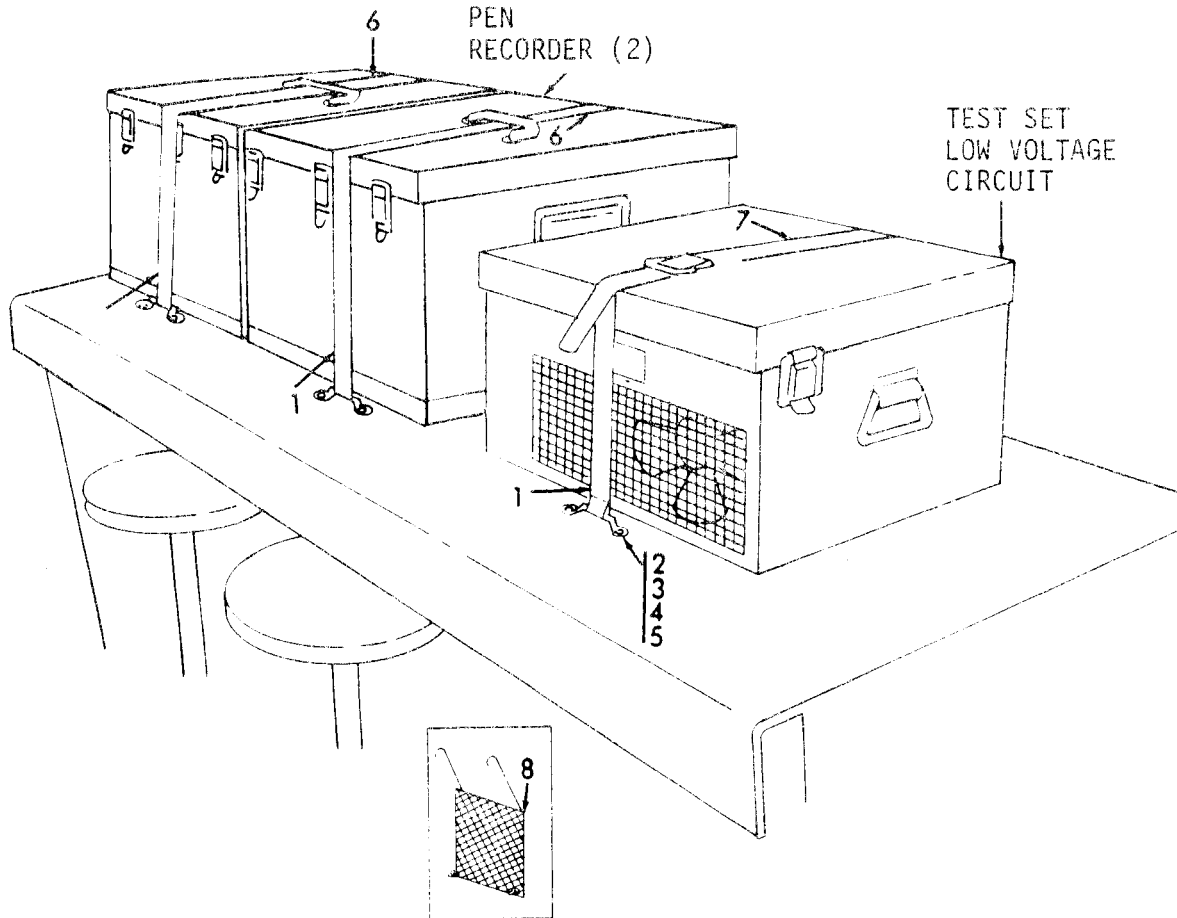
- a. General. The armature undercutter is located on the front top of the right side workbench.
- b. Removal (fig. 12). Remove four screws (1) securing the armature undercutter to the workbench and remove undercutter.
- c. Installation. Install the armature undercutter in reverse order of removal b. above.

3-17. TEST SET, LOW VOLTAGE CIRCUIT, AND PEN RECORDERS.

a. General. The two recorders and the test set are located on the front workbench.

b. Removal. Refer to figure 13 and unfasten the six straps (two straps mounting each component) and remove the two pen recorders and the test set, low voltage circuit.

c. Installation. Install the three components in the reverse order of removal, b. above.



ITEM	NAME	QTY	PART NUMBER	(FSCM)
1	Strap	3	11020949-5	(19204)
2	Screw	12	MS35206-267	(96906)
3	Loop	6	MS51939-1	(96906)
4	Washer	12	MS35338-43	(96906)
5	Nut	12	MS35649-202	(19204)
6	Strap	2	11020948-15	(19204)
7	Strap	1	11020948-11	(19204)
8	Guard	1	13217E8117	(19204)

Figure 13. Test Set, Low Voltage Circuit, and Pen Recorders.

3-18. PANEL ASSEMBLIES.

a. General. The panel assemblies are stacked on top of the left and right workbench.

b. Removal (fig. 5). Unfasten four straps and remove two panel assemblies .

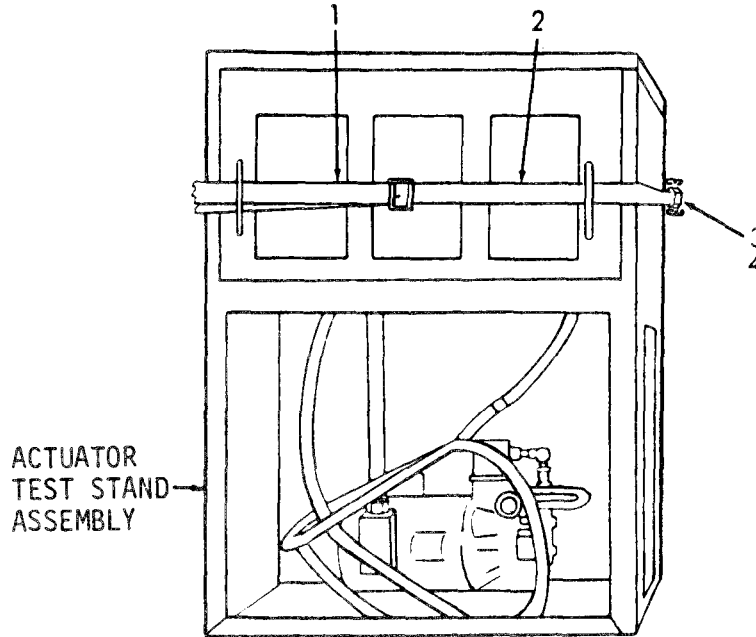
c. Installation. Reverse the procedures in b. above.

3-19. ACTUATOR TEST STAND ASSEMBLY.

a. General. The test stand is located to the left of the front workbench.

b. Removal. Refer to figure 14 and unfasten straps (1 & 2) to remove the actuator test stand assembly.

c. Installation. Install the test stand in reverse order of removal, b. above.



ITEM	NAME	QTY	PART NUMBER	(FSCM)
1	Strap	1	11020949-5	(19204)
2	Strap	1	11020948-15	(19204)
3	Screw	4	MS51861-46	(96906)
4	Loop	2	MS51939-1	(96906)

Figure 14. Actuator Test Stand.

3-20. UPRIGHT BROOM.

a. General. Broom is mounted on the rear wall in back of the left side workbench.

b. Removal. Refer to figure 15 and unfasten two straps and remove broom.

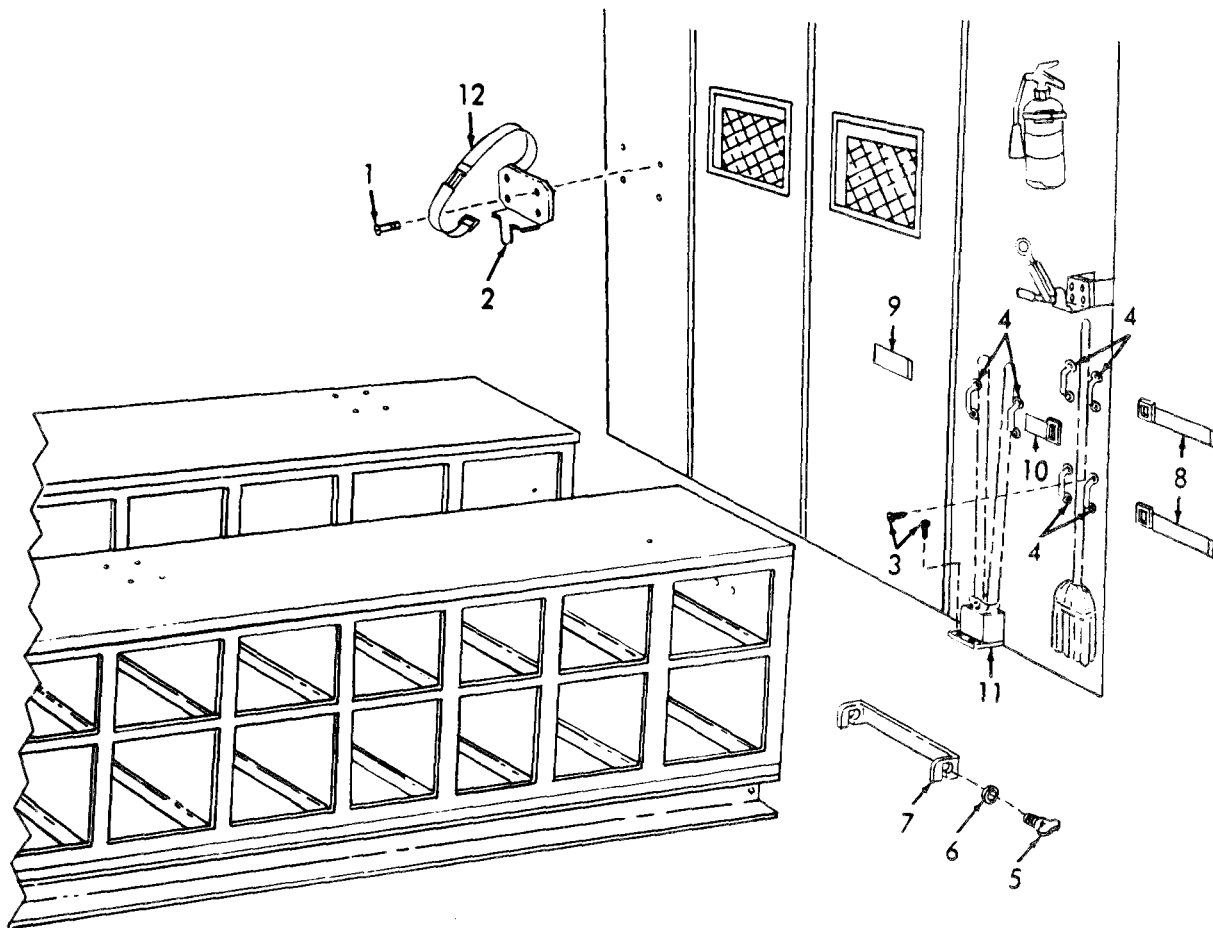
c. Installation. Install broom in reverse order of removal, b. above.

3-21. BOLT CUTTER.

a. General. The bolt cutter is mounted on the rear wall in back of the left side workbench.

b. Removal. Unfasten straps (9 & 10) and lift bolt cutter from its mounting bracket (fig. 15).

c. Installation. Install bolt cutter in reverse order of removal, b. above.



ITEM	NAME	QTY	PART NUMBER	(FSCM)
1	Screw	4	MS51861-65	(96906)
2	Bracket	1	13217E8126	(19204)
3	Screw	14	MS51861-46	(96906)
4	Loop	6	MS51939-1	(96906)
5	Screw	2	MS21316-56	(96906)
6	Washer	2	MS27183-15	(96906)
7	Bracket	1	13217E8101	(19204)
8	Strap	2	11020947-3	(19204)
9	Strap	1	11020948-15	(19204)
10	Strap	1	11020949-1	(19204)
11	Bracket	1	11021009	(19204)
12	Clamp	1	13217E8127	(19204)

Figure 15. Bolt Cutter, Broom, First Aid Kit, and Fire Extinguisher.

3-22. PORTABLE HOIST TRESTLE.

a. General. The portable hoist trestle is located on the floor, under the left side workbench.

b. Removal. Refer to figure 16 and remove two thumb screws and two washers securing the bracket over the hoist to the rear of the left side workbench. Remove bracket and hoist.

c. Installation. Install portable hoist trestle in reverse order of removal, b. above.

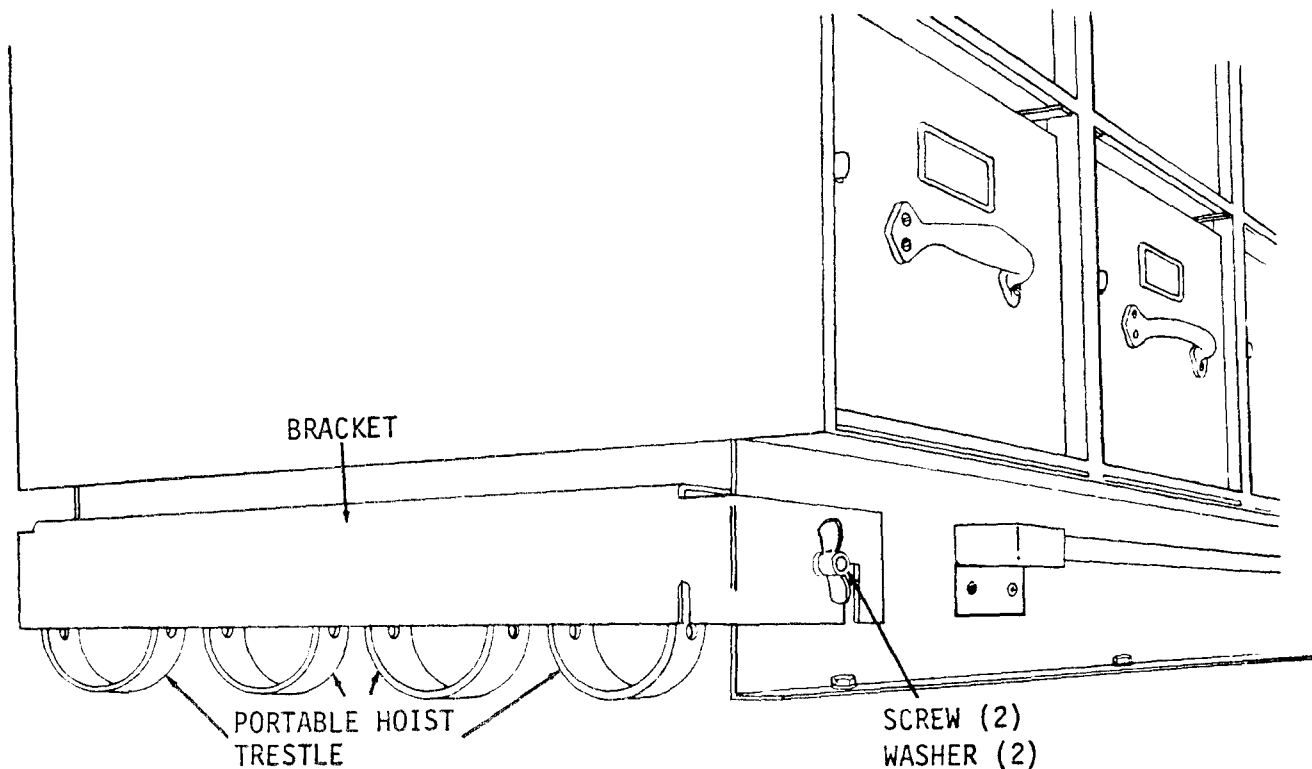


Figure 16. Portable Hoist Trestle.

### Section III. WORKBENCHES

#### 3-23. LEFT AND RIGHT SIDE WORKBENCH.

a. General. The two workbenches are located in the center of the trailer and are mounted to the van floor.

b. Removal.

- (1) Remove battery charger (para 3-3).
- (2) Remove machinist vise (para 3-4).
- (3) Remove utility grinding machine (para 3-5).
- (4) Remove portable tool box, socket wrench set, torque wrench, and general mechanic's tool kit (para 3-10).
- (5) Remove panel assemblies (para 3-18).
- (6) Remove power supply amplifier and oscillator (para 3-14).
- (7) Remove armature undercutter (para 3-16).
- (8) Remove oven (para 3-15).
- (9) Remove portable hoist trestle (para 3-22).
- (10) Remove crowbar, ground rod, and wrecking bar (para 3-11).
- (11) Disconnect electrical connections from both workbenches.
- (12) Refer to figure 22 and remove eight screws (6) and eight washers (7) and eight rivnuts (8) securing the four hold-down braces (5) to the workbenches.
- (13) Remove eight screws (6) securing the four holddown braces to ceiling of van.
- (14) Remove 36 bolts and 36 washers (18 for each workbench) securing workbenches to van floor, and remove the two benches (fig. 4).

c. Disassembly. Refer to figure 17 and disassemble the workbenches and related parts.

d. Cleaning, Inspection and Repair.

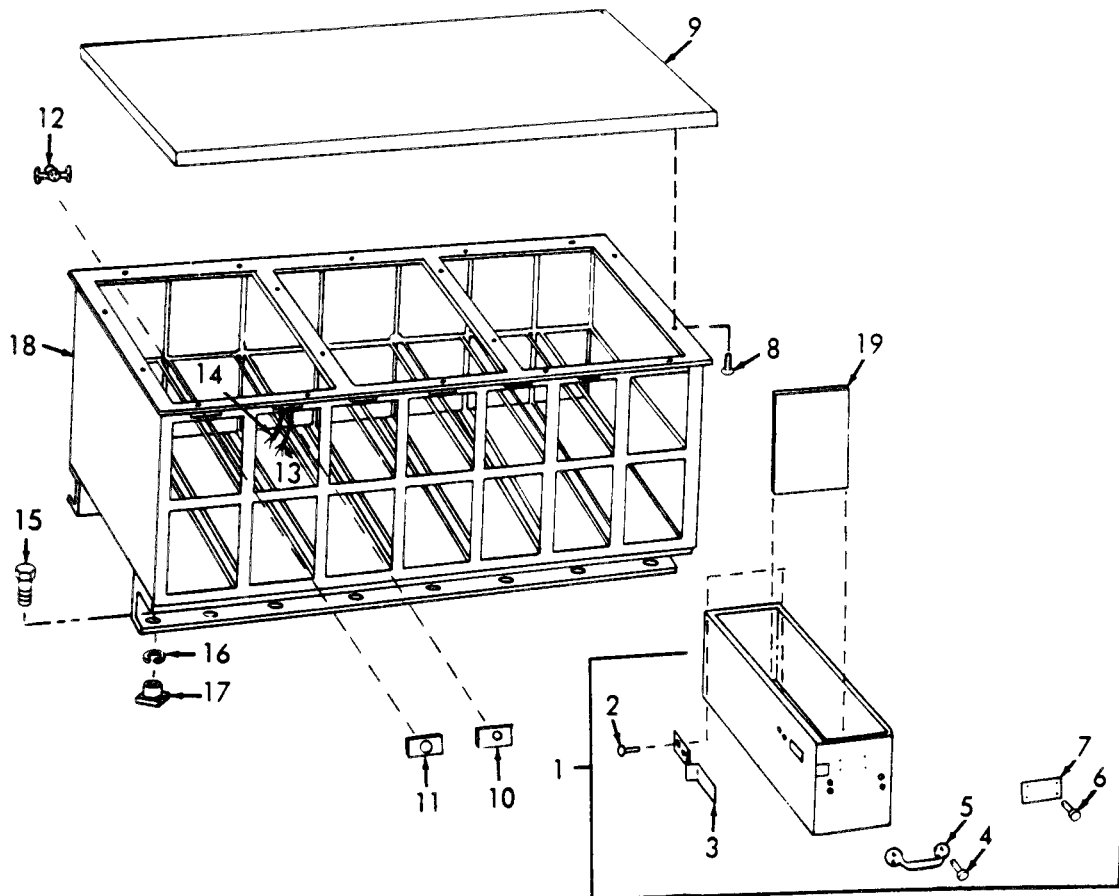
- (1) Clean all metal parts with cleaning solvent (P-D-680) and dry thoroughly. Clean other parts with a clean cloth.

- (2) Inspect items for cracks, breaks, bends, dents and other damage.
- (3) Check mounting hardware for damaged threads and distortion. Replace damaged and missing hardware.
- (4) Straighten bends and dents. Remove nicks, burrs and distortions.
- (5) Replace all items beyond repair.

e. Assembly. Refer to figure 17 and reassemble the workbenches and related parts.

f. Installation. Install the left and right side workbench in the reverse order of removal, b. above.





ITEM	NAME	QTY	PART NUMBER	(FSCM)
1	Drawer, Work Bench	14	13217E8105	(19204)
2	Rivet, Spring Mounting	28	MS20613-4P5	(96906)
3	Spring, Drawer Retainer	14	13217E8135	(19204)
4	Rivet, Handle Mounted	56	MS35744-18	(96906)
5	Handle, Grab	14	13212E0135	(19204)
6	Rivet, Holder Mounting	56	MS20613-2P3	(96906)
7	Holder, Label	14	13217E8104	(19204)
8	Screw, Bench Top Mounting	18	MS35493-113	(96906)
9	Top, Bench	1	11021004	(19204)
10	Cover, Conduit Mounting	1	13217E8106-4	(19204)
11	Cover, Receptacle	13	13217E8106-5	(19204)
12	Receptacle, Electrical	13	13217E8106-6	(19204)
13	Wire, 25' Long	3	13217E8106-3	(19204)
14	Wire, 11' Long (used on 13217E8106-1)	2	13217E8106-7	(19204)
15	Screw, Work Bench Mounting	16	MS90725-64	(96906)
16	Washer, Work Bench Mounting	16	MS35338-46	(96906)
17	Nut, Work Bench Mounting	16	MS27130-S56	(96906)
18	Frame, Bench (used on 13217E8106-2)	1	11021013	(19204)
18	Frame, Bench (used on 13217E8106-1)	1	11021008	(19204)
19	Divider, Drawer	14	11021006	(19204)

Figure 17. Left and Right Side Workbench.

Section IV. EQUIPMENT INSTALLATION

3-24. PLATFORM ASSEMBLY INSTALLATION.

a. Removal and Disassembly. Refer to figures 18 and 19 and disassemble.

b. Cleaning, Inspection, and Repair.

- (1) Clean parts with cleaning solvent (P-D-680) and dry thoroughly.
- (2) Inspect parts for cracks, breaks, and other damage.
- (3) Inspect for missing or damaged hardware.
- (4) Replace all damaged parts beyond repair; replace missing hardware.

c. Assembly and Installation. Refer to figures 18 and 19 and reassemble.

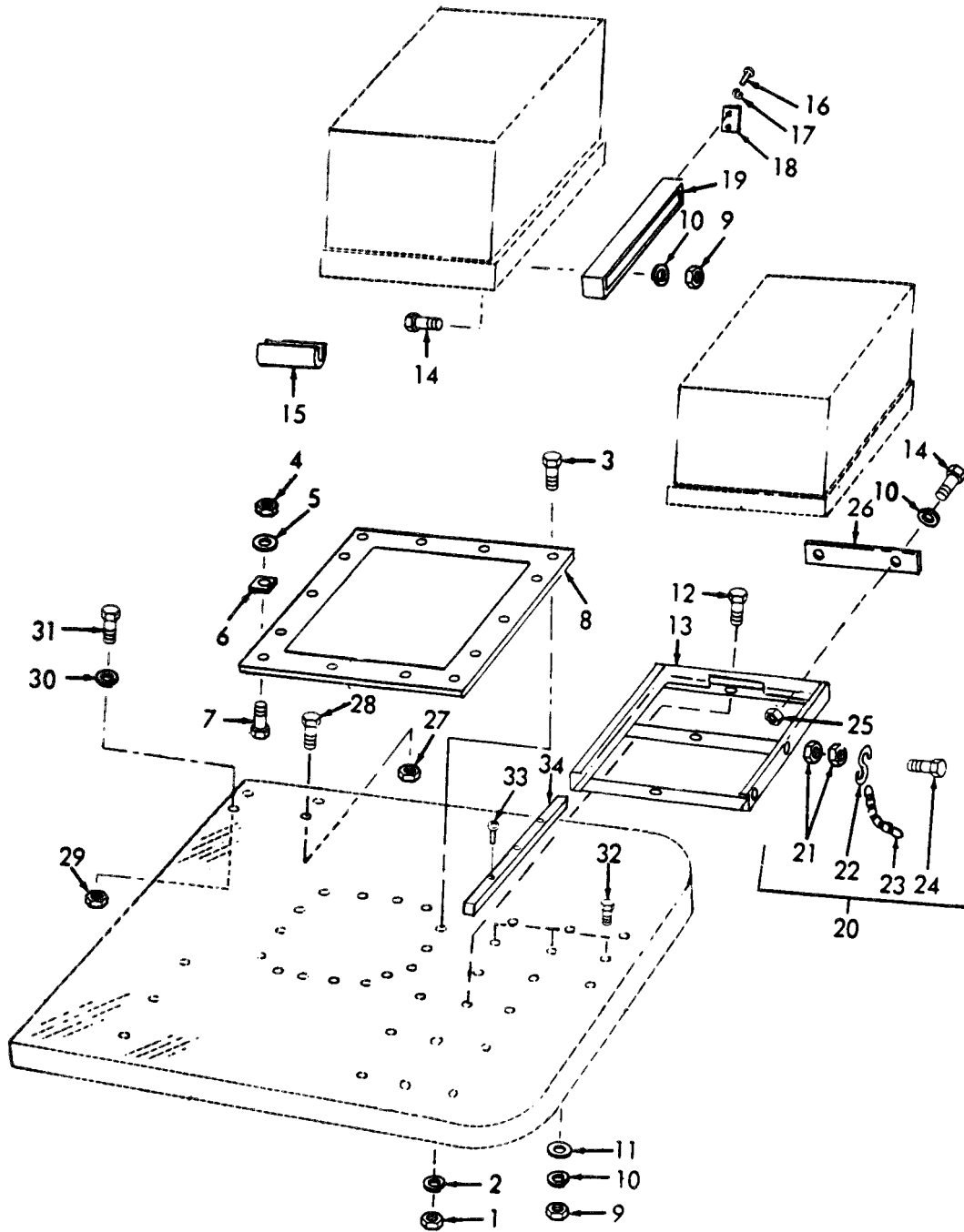
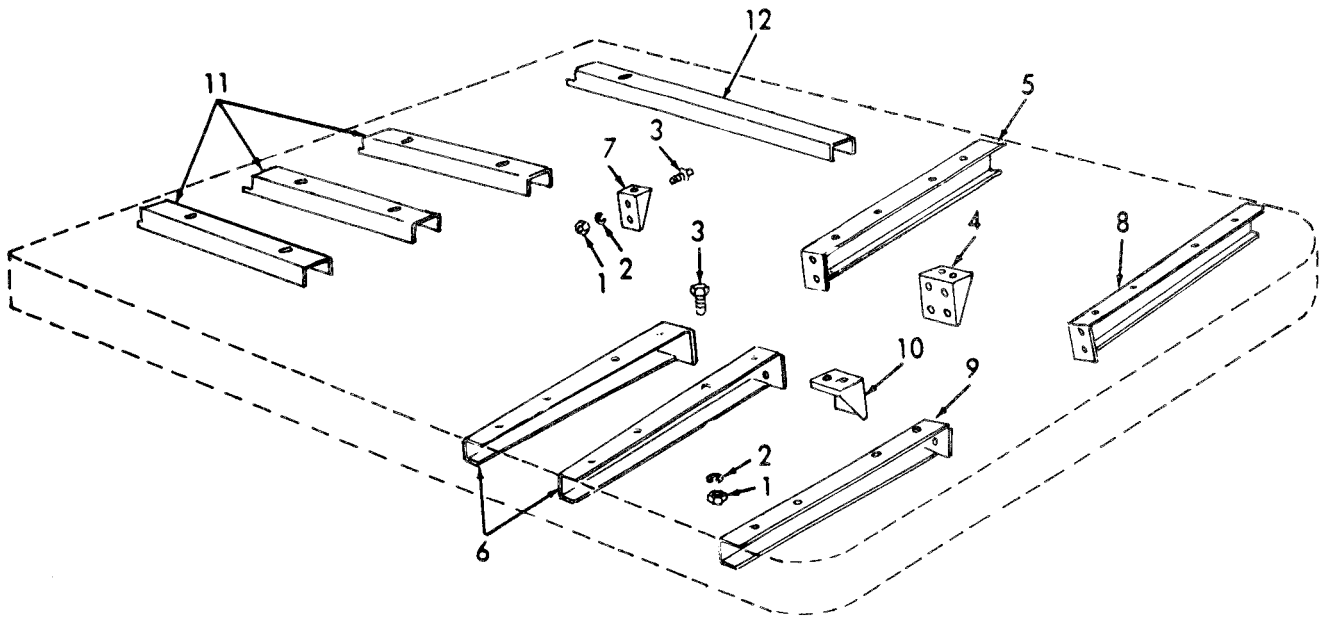


Figure 18. Platform Assembly Installation.

## KEY TO FIGURE 18.

ITEM	NAME	QTY	PART NUMBER	(FSCM)
1	NUT, PLAIN, POWER TEST SET	8	MS51967-14	(96906)
2	WASHER, LOCK, POWER TEST SET	8	MS35338-48	(96906)
3	SCREW, POWER TEST SET	8	MS90725-43	(96906)
4	NUT, PLAIN, POWER TEST SET TO PLATE	6	MS51967-20	(96906)
5	WASHER, POWER TEST SET TO PLATE	6	MS35338-50	(96906)
6	WASHER, BEVELED, POWER TEST SET TO PLATE	6	11021062	(19204)
7	SCREW, CAP, POWER TEST SET TO PLATE	6	MS24667-86	(96906)
8	MOUNT ASSEMBLY, POWER TEST SET	1	11021028	(19204)
9	NUT, PLAIN, FRAME MOUNTING	68	MS51967-8	(96906)
10	WASHER, FRAME MOUNTING	72	MS35338-46	(96906)
11	WASHER, FRAME MOUNTING	12	MS27183-13	(96906)
12	SCREW, FRAME MOUNTING	36	MS90725-62	(96906)
13	FRAME ASSEMBLY, POWER TEST SET	4	11021027	(19204)
14	SCREW	40	MS90725-60	(96906)
15	FINGER PULL	4	11021049	(19204)
16	SCREW, SEAL MOUNTING	16	MS24629-47	(96906)
17	WASHER, SEAL MOUNTING	16	AN970-3	(88044)
18	SEAL, CARRIER	8	11021002	(19204)
19	CARRIER ASSEMBLY	8	11021048	(19204)
20	CHAIN, BOLT ASSEMBLY	4	11021030	(19204)
21	NUT, CHAIN MOUNTING	16	MS35649-2382	(96906)
22	HOOK, "S" CHAIN	8	MS87006-23	(96906)
23	CHAIN, 10 LINES	8	11021030-1	(19204)
24	SCREW, CHAIN MOUNTING	8	MS90725-66	(96906)
25	NUT, RETAINER PLATE	8	MS27130S56	(96906)
26	PLATE, RETAINER	4	11021031	(19204)
27	NUT, GENERATOR MOUNTING	1	MS51922-49	(96906)
28	SCREW, GENERATOR MOUNTING	1	MS90725-168	(96906)
29	NUT, GENERATOR MOUNTING	3	MS51967-20	(96906)
30	WASHER, GENERATOR MOUNTING	3	MS35338-50	(96906)
31	SCREW, GENERATOR MOUNTING	3	MS90725-162	(96906)
32	SCREW	3	171108	(19204)
33	RIVET, FRAME GLIDE MOUNTING	8	MS24662-226	(96906)
34	GLIDE, FRAME ASSEMBLY	2	11021050	(19204)



ITEM	NAME	QTY	PART NUMBER	(FSCM)
1	Nut, Bracket Mounting	20	MS51967-8	(96906)
2	Washer, Bracket Mounting	20	MS35338-46	(96906)
3	Screw, Bracket Mounting	20	MS90725-62	(96906)
4	Bracket Assembly	1	11021026-1	(19204)
5	Outrigger	1	11021025-1	(19204)
6	Outrigger	2	11021025-2	(19204)
7	Bracket Assembly	1	11021024	(19204)
8	Outrigger	1	1102123-1	(19204)
9	Outrigger	1	1102123-2	(19204)
10	Bracket Assembly	1	11021026-2	(19204)
11	Channel	3	11021021	(19204)
12	Channel	1	11021022	(19204)

Figure 19. Platform Assembly Modification.

### 3-25. GENERATOR EXHAUST INSTALLATION

#### NOTE

Generator Exhaust Kit and mounting hardware for generator are stowed under the front workbench.

a. Removal and Disassembly. Refer to figure 20 to remove and disassemble the eight generator exhaust items.

b. Cleaning, Inspection, and Repair.

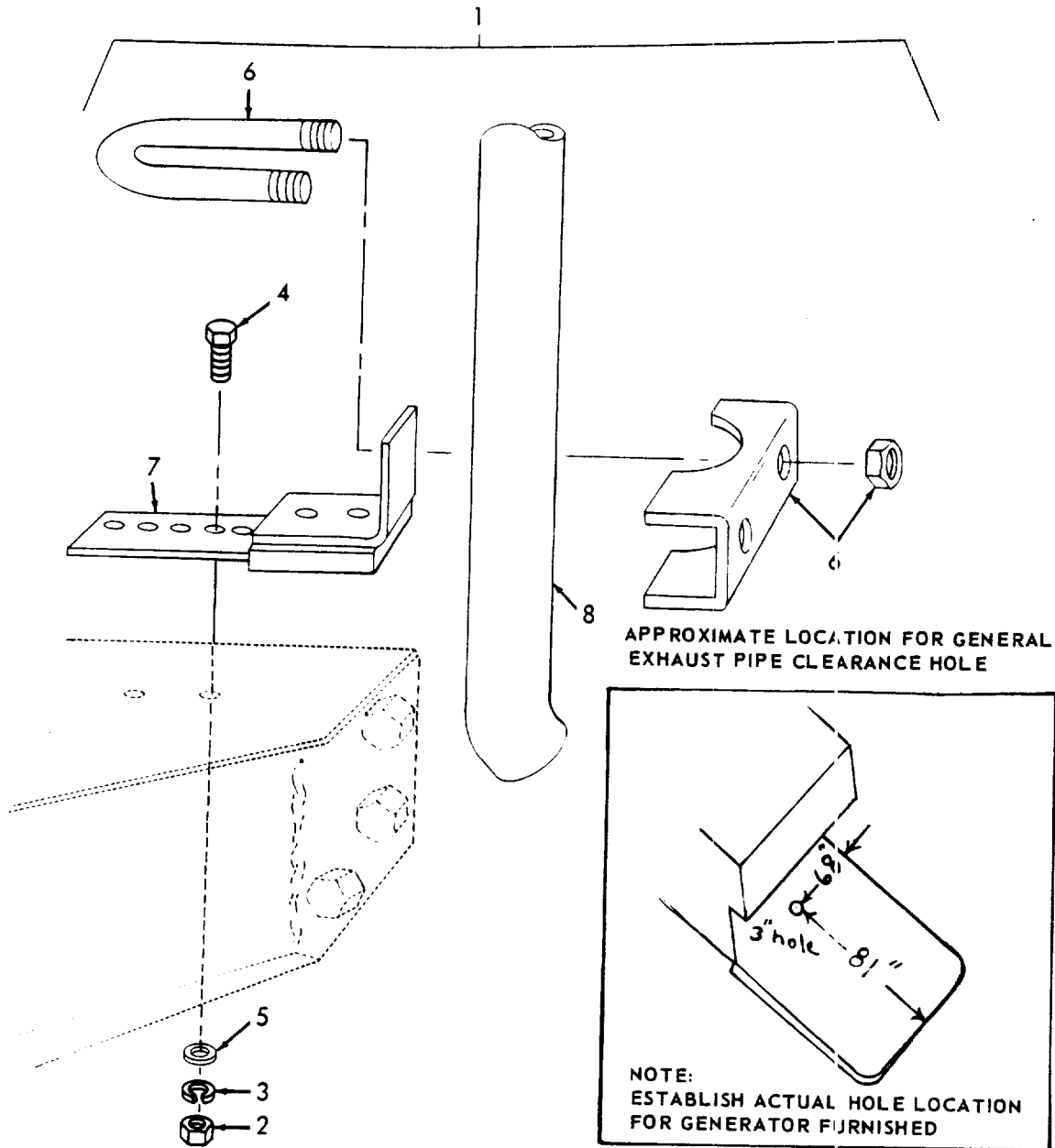
(1) Clean parts with cleaning solvent (P-D-680) and dry thoroughly.

( 2 ) Inspect parts for dents, cracks, breaks, and other damage.

(3) Replace damaged items.

(4) Replace missing or damaged hardware.

c. Assembly and Installation. Refer to figure 20 and reinstall the eight generator exhaust components.



ITEM	NAME	QTY	FART NUMBER	(FSCM)
1	Exhaust Kit, General Installation	1	11021029	(19204)
2	Nut, Hanger Mounting	2	MS51967-2	(96906)
3	Washer, Lock, Hanger Mounting	2	MS35338-44	(96906)
4	Screw, Hanger Mounting	2	MS90725-8	(96906)
5	Washer, Hanger Mounting	2	MS27183-9	(96906)
6	Clamp Assembly, Exhaust	2	11021038-2	(19204)
7	Hanger Assembly, Exhaust	1	11021037	(19204)
8	Pipe, Exhaust	1	11021036	(19204)

Figure 20. Generator Exhaust Installation.

3-26. POWER SUPPLY INSTALLATION.

a. Removal and Disassembly. Refer to figure 21 to remove and disassemble.

b. Cleaning, Inspection, and Repair.

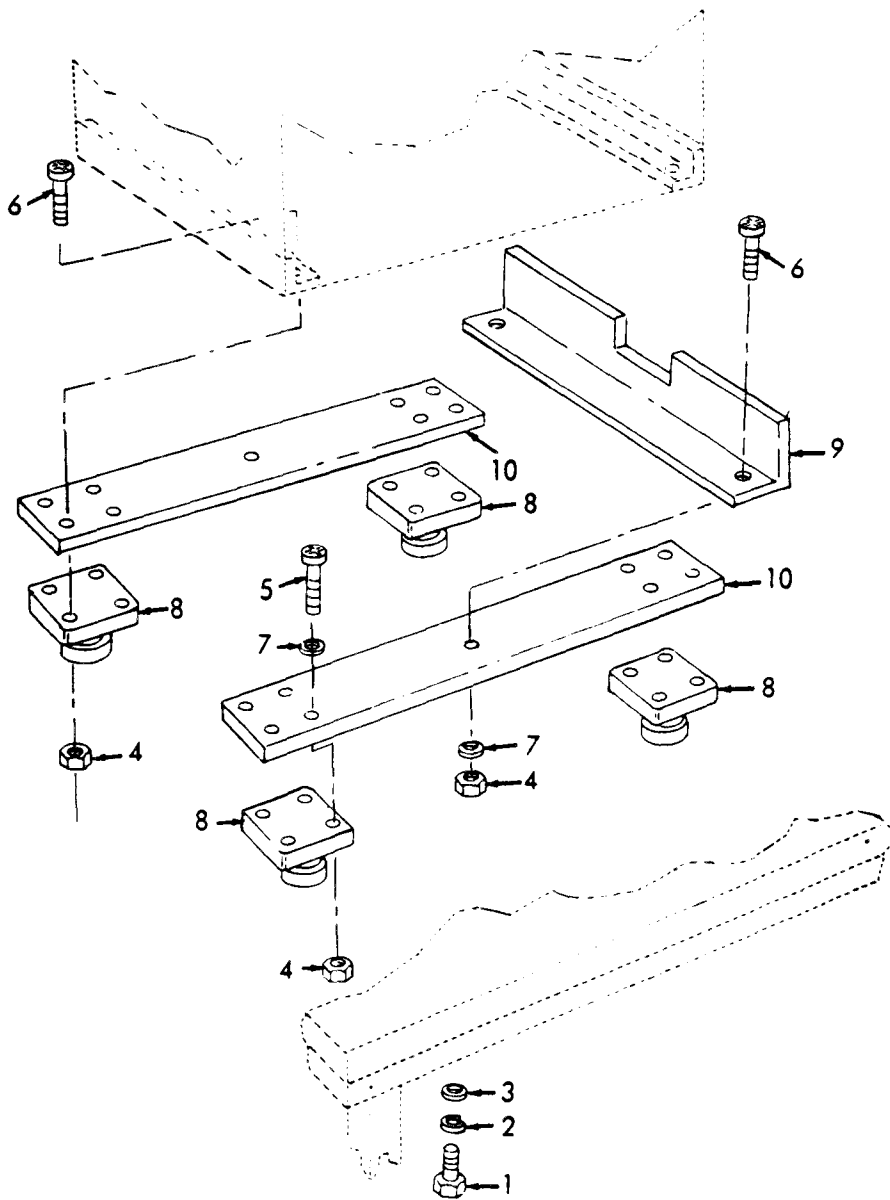
(1) Clean metal parts with cleaning solvent (P-D-680) and dry thoroughly.

(2) Inspect all parts for cracks, breaks, and wear.

(3) Replace damaged items.

c. Assembly and Installation. Refer to figure 21 to reassemble and install.





ITEM	NAME	QTY	PART NUMBER	(FSCM)
1	Screw, Power Supply Mounting	4	MS90725-16	(96906)
2	Washer, Power Supply Mounting	4	MS35338-44	(96906)
3	Washer, Power Supply Mounting	4	MS27183-10	(96906)
4	Nut, Shock Mounting	18	MS21045L3	(96906)
5	Screw, Shock Mounting	8	MS35207-265	(96906)
6	Screw, Shock Mounting	10	MS35207-266	(96906)
7	Washer, Shock Mounting	18	MS27183-8	(96906)
8	Mount, Shock	4	11021041	(19204)
9	Angle, Shock Mounting	1	11021042	(19204)
10	Plate, Mounting	2	11021040	(19204)

Figure 21. Power Supply Installation.

Section V. PANEL STOWAGE ASSEMBLY

3-27. PANEL STOWAGE ASSEMBLY.

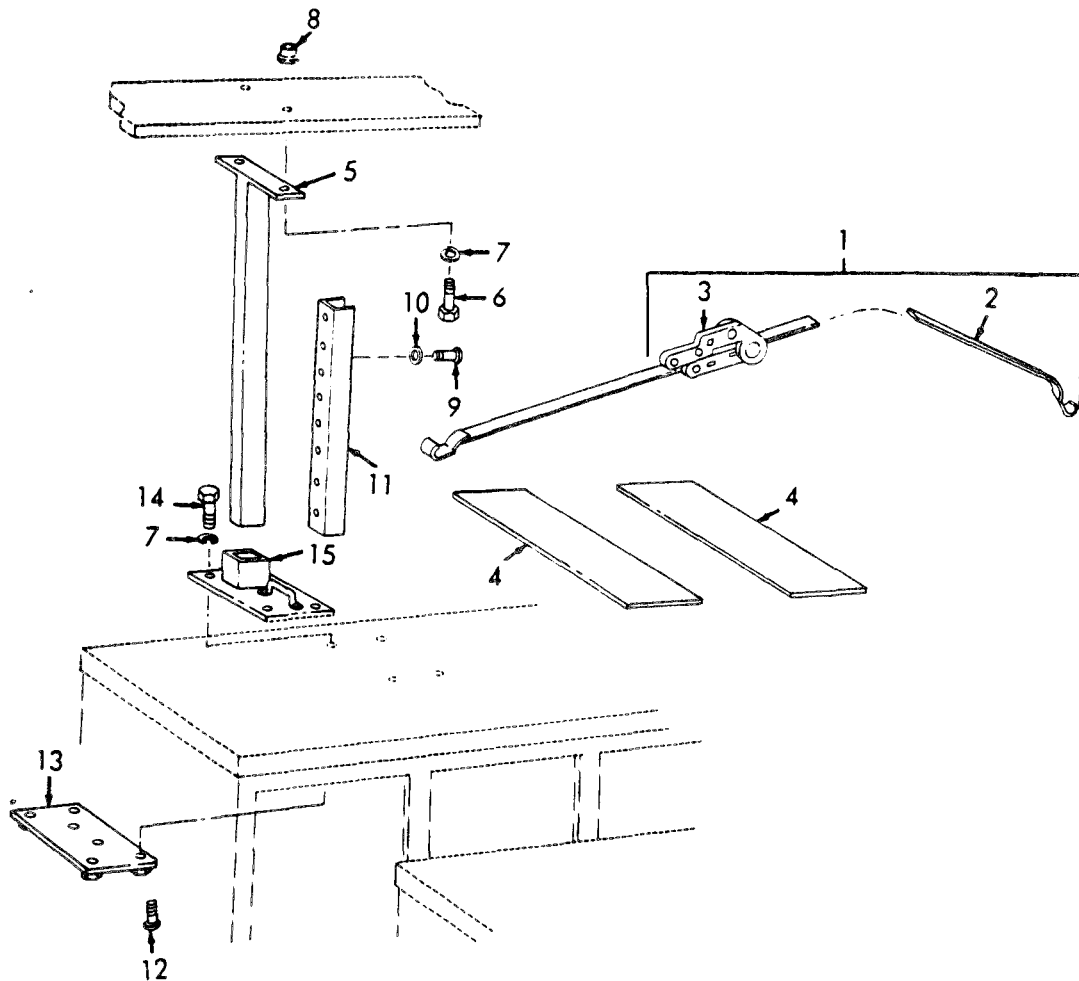
a. Removal and Disassemble. Refer to figure 22 to remove and disassemble the panel stowage assembly.

b. Cleaning, Inspection, and Repair.

(1) Clean metal parts with cleaning solvent (P-D-680) and dry thoroughly. Clean other parts with a clean, dry cloth.

(2) Inspect all parts for damage and repair and replace as necessary.

c. Assembly and Installation. Refer to figure 22 and install the panel stowage assembly.



ITEM	NAME	QTY	PART NUMBER	(FSCM)
1	Strap Assembly, Stowage	2	13217E8111	(19204)
2	Strap End	2	13217E8111-2	(19204)
3	Ratchet End	2	13217E8111-1	(19204)
4	Pad, Stowage	4	11021032	(19204)
5	Strut Assembly	4	11021033	(19204)
6	Screw, Stowage Strut	8	MS90725-61	(96906)
7	Washer, Lock	24	MS35338-46	(96906)
8	Rivnut, Strut Mounting	8	MS27130S56	(96906)
9	Screw, Bumper Mounting	32	MS24625-50	(96906)
10	Washer, Bumper Mounting	32	MS27183-8	(96906)
11	Bumper, Panel	4	11021052-0230	(19204)
12	Screw, Plate Mounting	8	MS35493-53	(96906)
13	Plate Assembly, Strut	4	11021035	(19204)
14	Screw, Tiedown Mounting	16	MS90725-70	(96906)
15	Tiedown Assembly	4	11021034	(19204)

Figure 22. Panel Stowage Assembly.

## Section VI. DATA PLATES AND FRONT WORKBENCH

### 3-28. FRONT WORKBENCH.

a. General. The front workbench is located in front of the two center workbenches.

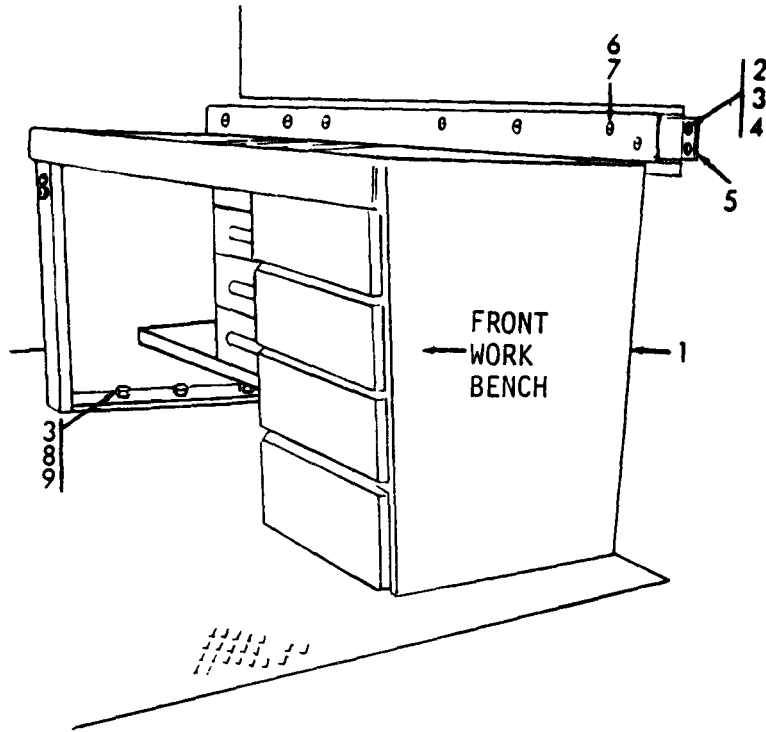
b. Removal.

- (1) Remove two stools and three pails (para 3-6) and one small parts stowage cabinet (para 3-7).
- (2) Remove the test set, low voltage circuit, and two pen recorders (para 3-17).
- (3) Remove the actuator test stand assembly (para 3-19).
- (4) Remove the thread cutting tap set and electrical insulation sheets (para 3-9).
- (5) Disconnect electrical receptacle and conduit from workbench.
- (6) Refer to figure 23 and remove six screws and six washers.
- (7) Remove eight screws (6) and eight washers (7) and remove workbench.

c. Cleaning, Inspection and Repair.

- (1) Clean all metal parts with cleaning solvent (P-D-680) and dry thoroughly. Clean other parts with a clean dry cloth.
- (2) Inspect for dents, nicks and burrs, cracks, breaks and other damage.
- (3) Remove distortions or replace damaged items. Replace missing hardware.

d. Installation. Install the front workbench in the reverse order of removal b. above.

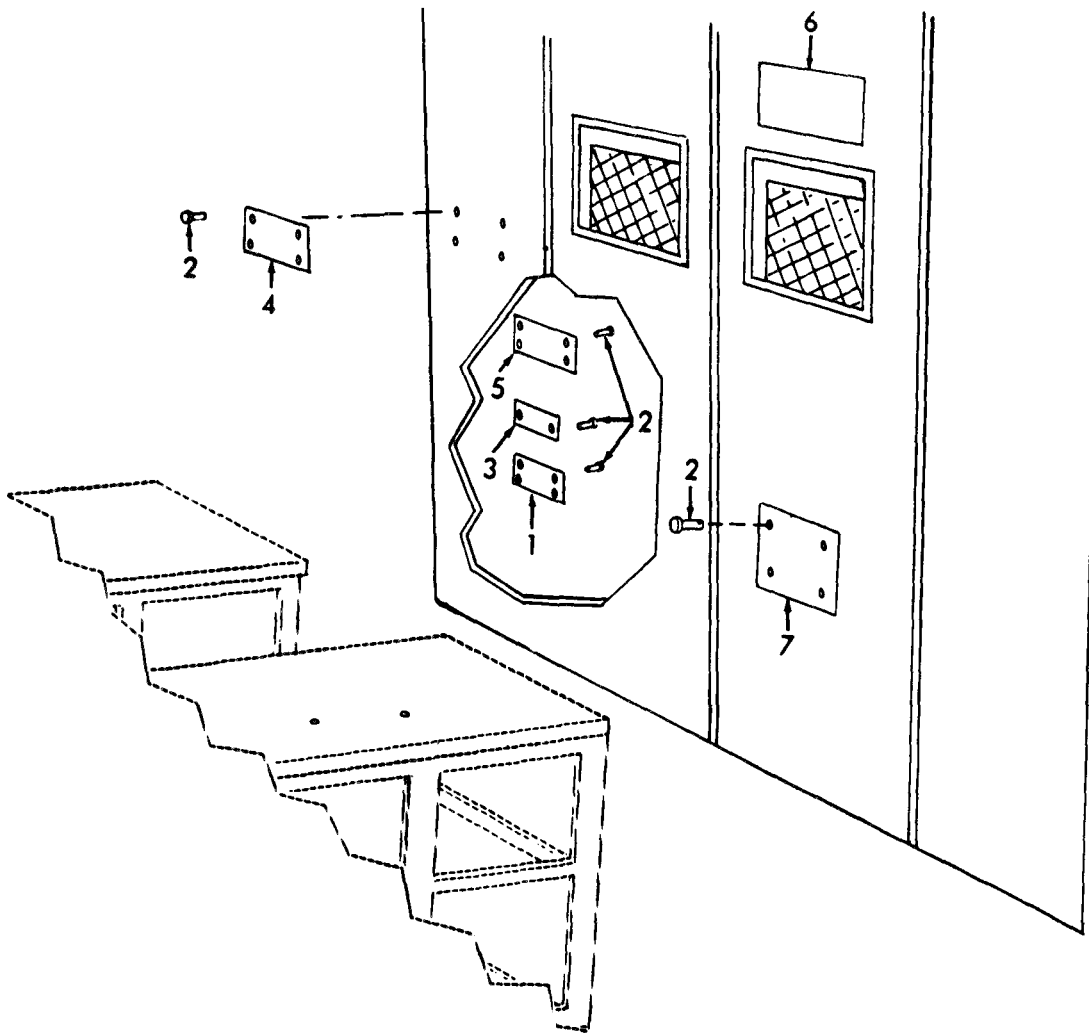


ITEM	NAME	QTY	PART NUMBER	(FSCM)
1	Work Bench	1	13217E8118	(19204)
2	Screw	4	MS90725-60	(96906)
3	Washer	10	MS35338-46	(96906)
4	Nut	4	MS51967-8	(96906)
5	Channel	1	1121018	(19204)
6	Screw	8	MS51851-85	(96906)
7	Washer	8	MS35338-40	(96906)
8	Screw	6	MS90725-64	(96906)
9	Nut	6	MS27130S56	(96906)

Figure 23. Front Workbench

3-29. DATA PLATES . The data plates are located on the rear door and wall.

- a. Removal. Refer to figure 24 and remove data plates.
- b. Cleaning, Inspection, and Repair.
  - (1) Clean data plates with cleaning solvent (P-D-680) and dry thoroughly.
  - (2) Inspect for dents and other damage.
  - (3) Replace damaged data plates.
- c. Installation. Refer to figure 24 and install data plates.



ITEM	NAME	QTY	PART NUMBER	(FSCM)
1	Plate, Information	1	13217E8303	(19204)
2	Rivet	18	MS24243/6A402H	(81349)
3	Plate, Instruction	1	13217E8110	(19204)
4	Plate, Instruction	1	13217E8133	(19204)
5	Plate, Information	1	13217E8100-1	(19204)
6	Decal	1	11021012	(19204)
7	Plate, Information	1	11021047	(19204)

Figure 24. Data Plates.

## Section VII. ELECTRICAL INSTALLATION

3-30. GENERAL . Refer to TM 9-2330-238-14&P for repair instructions. In addition, shop set components not covered in above manual, are contained in the following paragraph.

3-31. LOAD CENTERS AND RELATED COMPONENTS.

### NOTE

Before removal and after installation test the wiring, para b. (6), below.

a. Removal and Disassemble. Refer to figures 25 thru 29 to disconnect, remove and disassemble the electrical installation.

b. Cleaning, Inspection, and Repair.

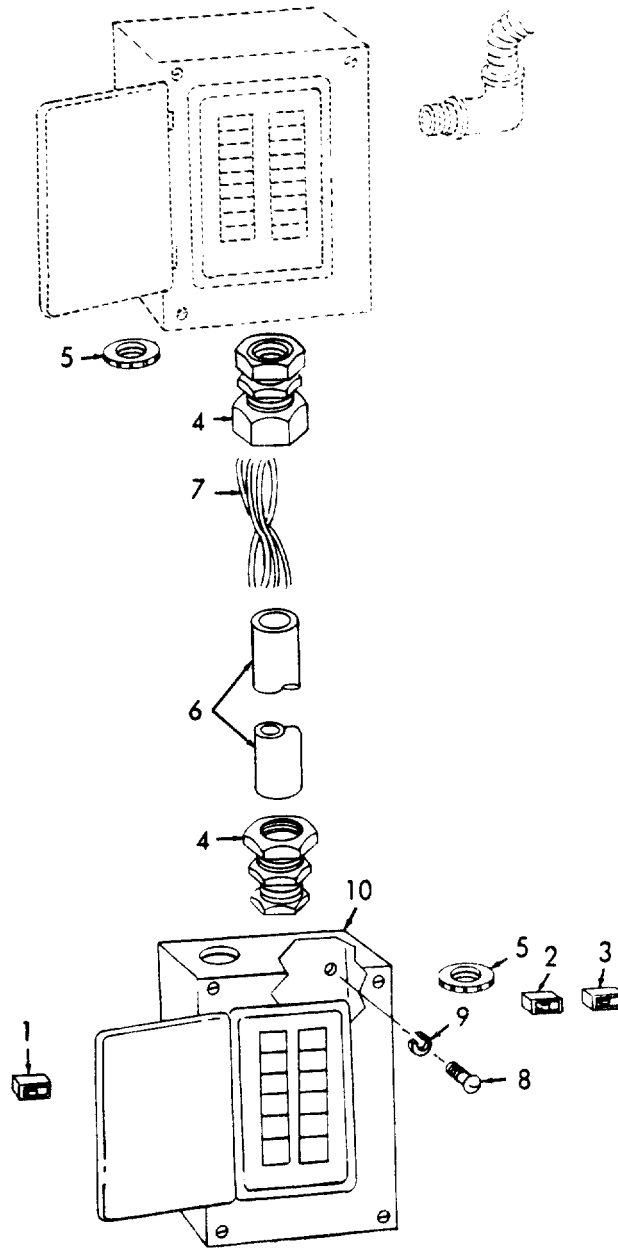
- (1) Clean electrical parts with a clean dry cloth.
- (2) Clean metal parts with cleaning solvent (P-D-680) and dry thoroughly.
- (3) Inspect all parts of load centers for damage and replace as necessary.
- (4) Inspect the wiring covers and mounting brackets for dents, cracks, breaks, loose or missing hardware, and other defects.
- (5) Tighten or replace loose or missing mounting hardware. Straighten minor bends. Replace damaged or defective mounting brackets, wiring covers, and flexible conduit.
- (6) Test the wires for continuity. Disconnect each end of the wire from the components to which it is attached as shown by the wiring diagram (fig. 1 & 2). Touch the test probes of a multimeter to each end of the wire. If the multimeter does not indicate continuity, replace the wire.

### NOTE

The ceiling lights, bench grinder, and workbench receptacles are supplied with power by 120-volt, single-phase circuit. Wiring for each circuit in this system must be replaced individually. Refer to the wiring diagrams (fig. 1 & 2) when testing and replacing wiring in the individual circuits.

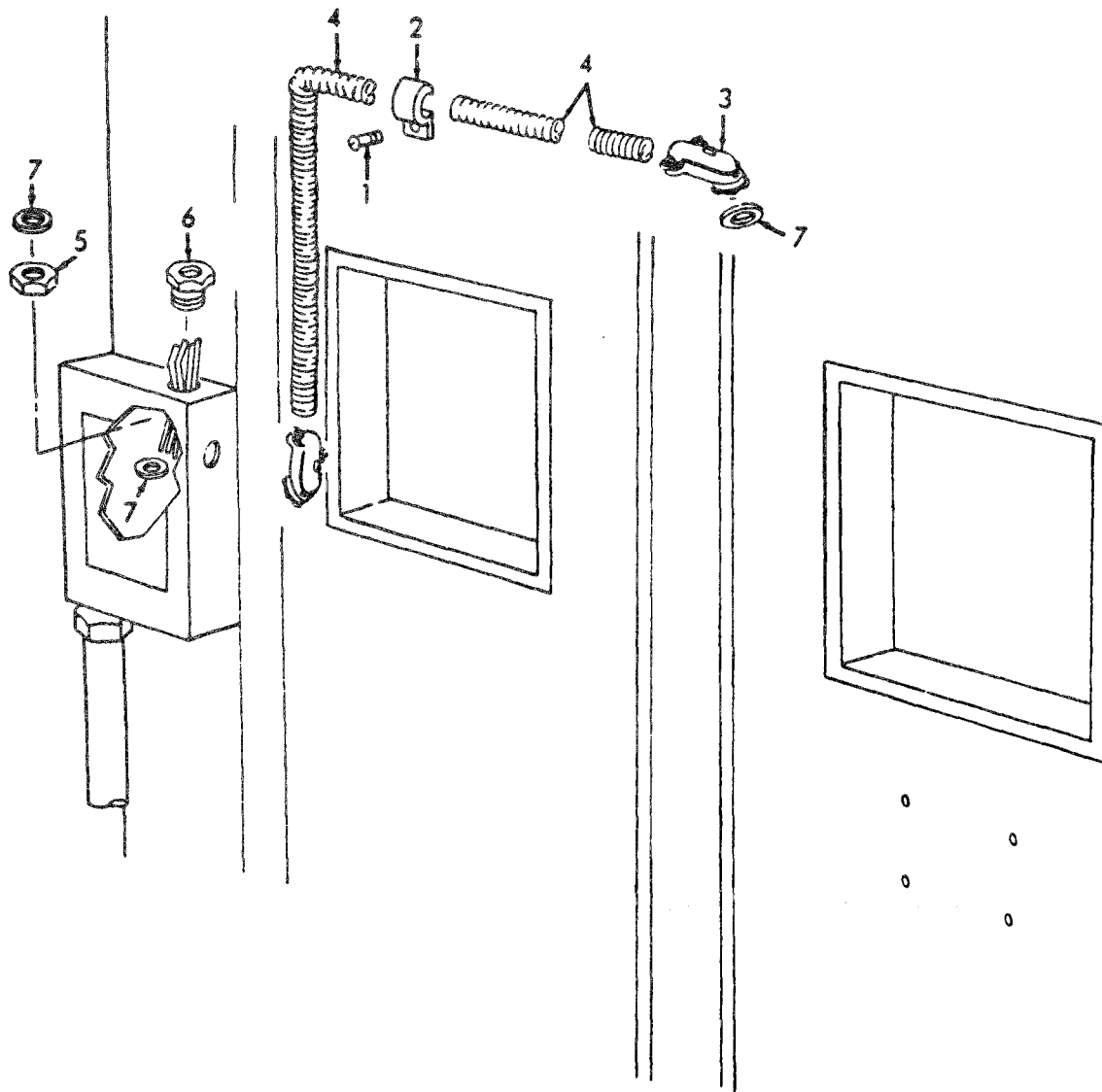


c. Assembly and Installation. Refer to figures 25 thru 29 to reassemble, install, and reconnect electrical components.



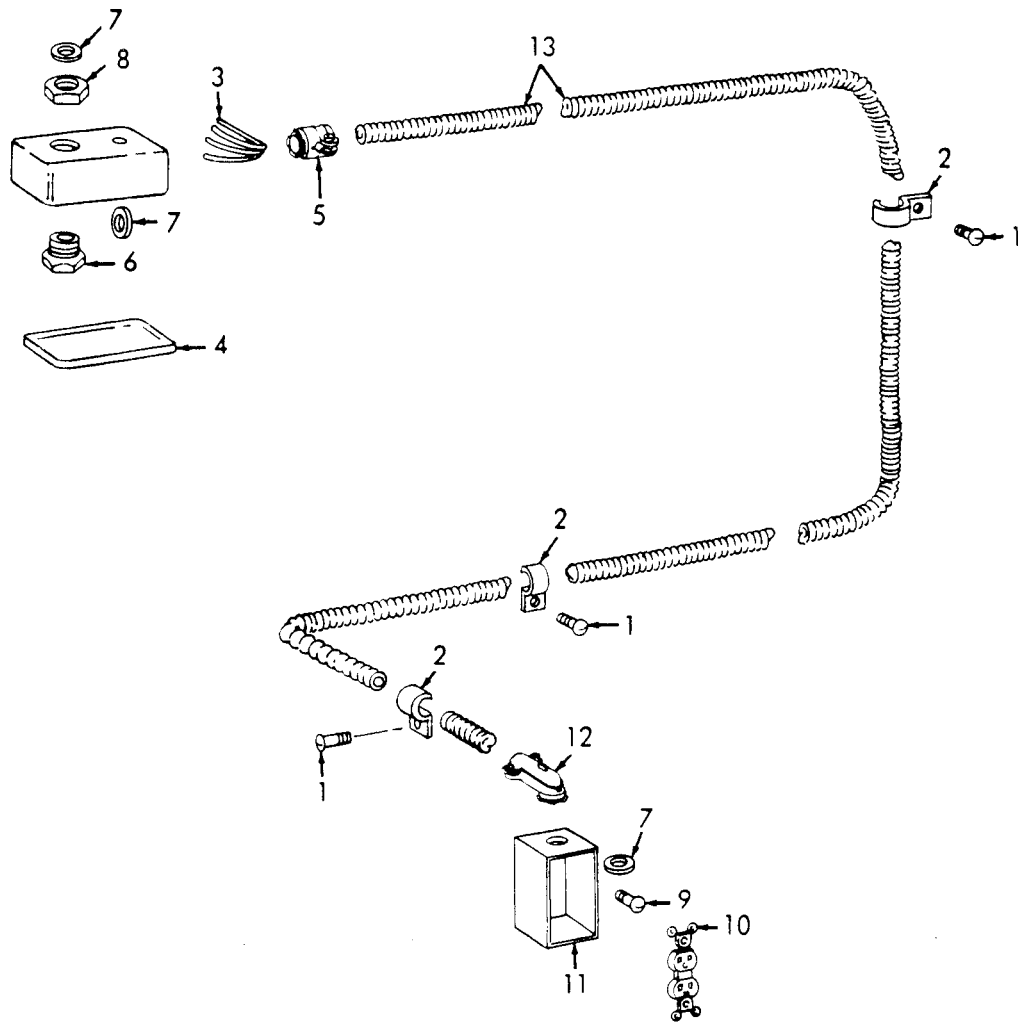
ITEM	NAME	QTY	PART NUMBER	(FSCM)
1	Breaker, Circuit, 240V 40 AMP	1	11021043-23	(19204)
2	Breaker, Circuit, 120V 15 AMP	3	11021043-02	(19204)
3	Breaker, Circuit, 120V 20 AMP	2	11021043-03	(19204)
4	Connector, Box	2	11021010-12	(19204)
5	Bushing, Connector	2	13218E0003-105	(19204)
6	Conduit, Rigid, 14" Long	1	11021010-11	(19204)
7	Wire, 3' Long	3	11021010-13	(19204)
8	Screw, Panel Mounting	4	MS24629-61	(96906)
9	Washer, Panel Mounting	4	MS35338-44	(96906)
10	Panel, Distribution	1	11021044	(19204)

Figure 25. Distribution Panel.



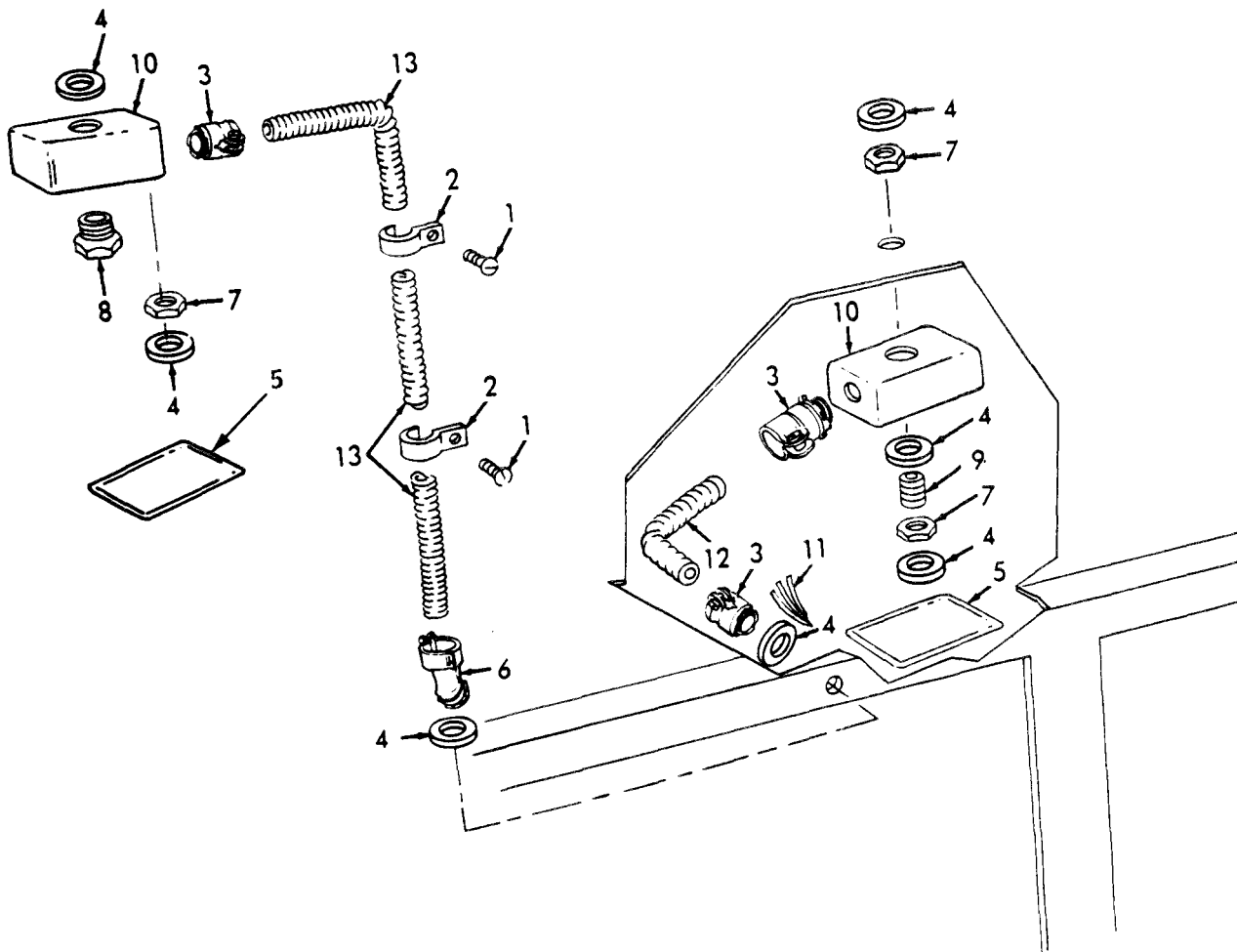
ITEM	NAME	QTY	PART NUMBER	(FSCM)
1	Screw, Strap Mounting	3	MS51861-65	(96906)
2	Strap, Conduit Mounting	3	MS35140-10	(96906)
3	Connector, Box, 90 Degree	2	13218E0003-23	(19204)
4	Conduit, Flexible, 5' Long	1	11021010-1	(19204)
5	Locknut, Nipple Mounting	1	11021010-8	(19204)
6	Nipple, Chase	1	11021010-7	(19204)
7	Bushing, Connector	3	13218E0003-100	(19204)

Figure 26. Distribution Panel Conduit



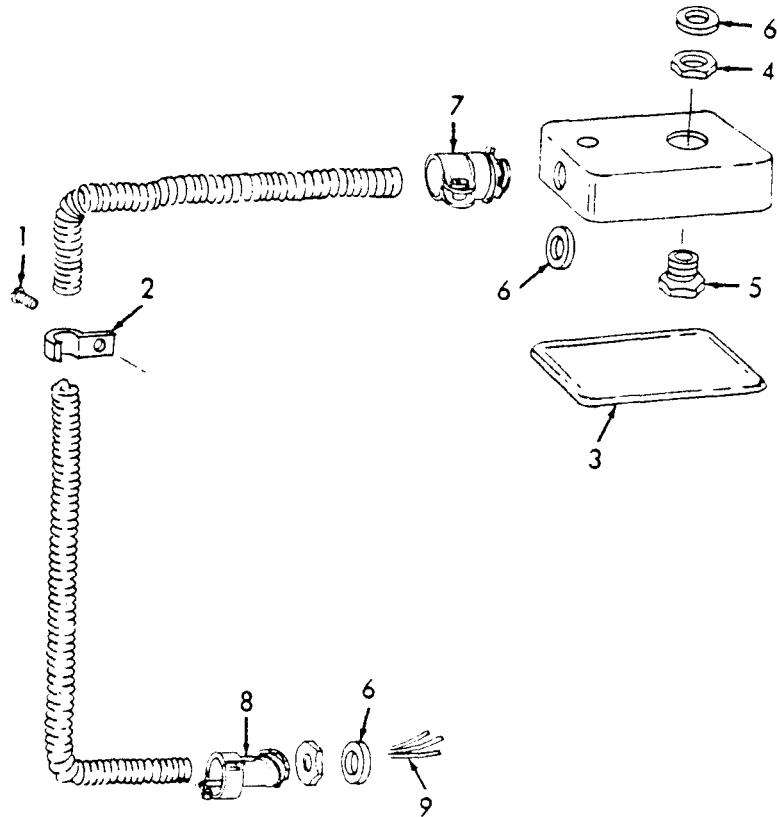
ITEM	NAME	QTY	PART NUMBER	(FSCM)
1	Screw, Strap Mounting	7	MS51861-65	(96906)
2	Strap, Conduit Mounting	7	MS35140-10	(96906)
3	Wire, 40' Long	3	11021010-6	(19204)
4	Cover	1	11021010-9	(19204)
5	Connector	1	13218E0003-2	(19204)
6	Nipple, Chase	1	11021010-7	(19204)
7	Bushing	3	13218E0003-100	(19204)
8	Locknut	1	11021010-8	(19204)
9	Screw	2	MS24629-23	(96906)
10	Receptacle	1	69-691	(30554)
11	Box, Junction	2	11021010-10	(19204)
12	Connector, 90 Degree	1	13218E0003-23	(19204)
13	Conduit, 13' Long	1	11021010-3	(19204)

Figure 27. Front Workbench Conduit and Receptacle.



ITEM	NAME	QTY	PART NUMBER	(FSCM)
1	Screw, Conduit Strap Mounting	3	MS51861-65	(96906)
2	Strap, Conduit Mounting	3	MS35410-10	(96906)
3	Connector, Box	3	13218E0003-2	(19204)
4	Bushing, Connector	7	13218E0003-100	(19204)
5	Cover, Box	2	11021010-9	(19204)
6	Connector, Work Bench Mounting	1	13218E0003-16	(19204)
7	Locknut, Nipple Mounting	3	11021010-8	(19204)
8	Nipple, Chase	1	11021010-7	(19204)
9	Nipple	1	MS51953-78	(96906)
10	Box, Junction	2	11021010-10	(19204)
11	Wire, 16' Long	6	11021010-5	(19204)
12	Conduit, 18" Long	1	11021010-2	(19204)
13	Conduit, 5' Long	1	11021010-1	(19204)

Figure 28. Left Side Workbench Conduit



ITEM	NAME	QTY	PART NUMBER	(FSCM)
1	Screw, Conduit Strap Mounting	1	MS51861-65	(96906)
2	Strap, Conduit Mounting	1	MS35410-10	(96906)
3	Cover, Box	1	11021010-9	(19204)
4	Locknut, Nipple Mounting	1	11021010-8	(19204)
5	Nipple, Chase	1	11021010-7	(19204)
6	Bushing, Connector	3	13218E0003-100	(19204)
7	Connector, Box	1	13218E0003-2	(19204)
8	Connector, Work Bench Mounting	1	13218E0003-16	(19204)
9	Wire, 11' Long	5	11021010-4	(19204)

Figure 29. Right Side Workbench Conduit

## CHAPTER 4

### CONTENTS OF SHOP EQUIPMENT

---

#### NOTE

The tools and equipment of the shop equipment are listed in Supply Catalog SC 4940-95-CL-B05 and the companion Hand Receipt Supply Catalog SC 4940-95-CL-B05-HR. Refer to figure 30 for the location of the shop equipment contents.

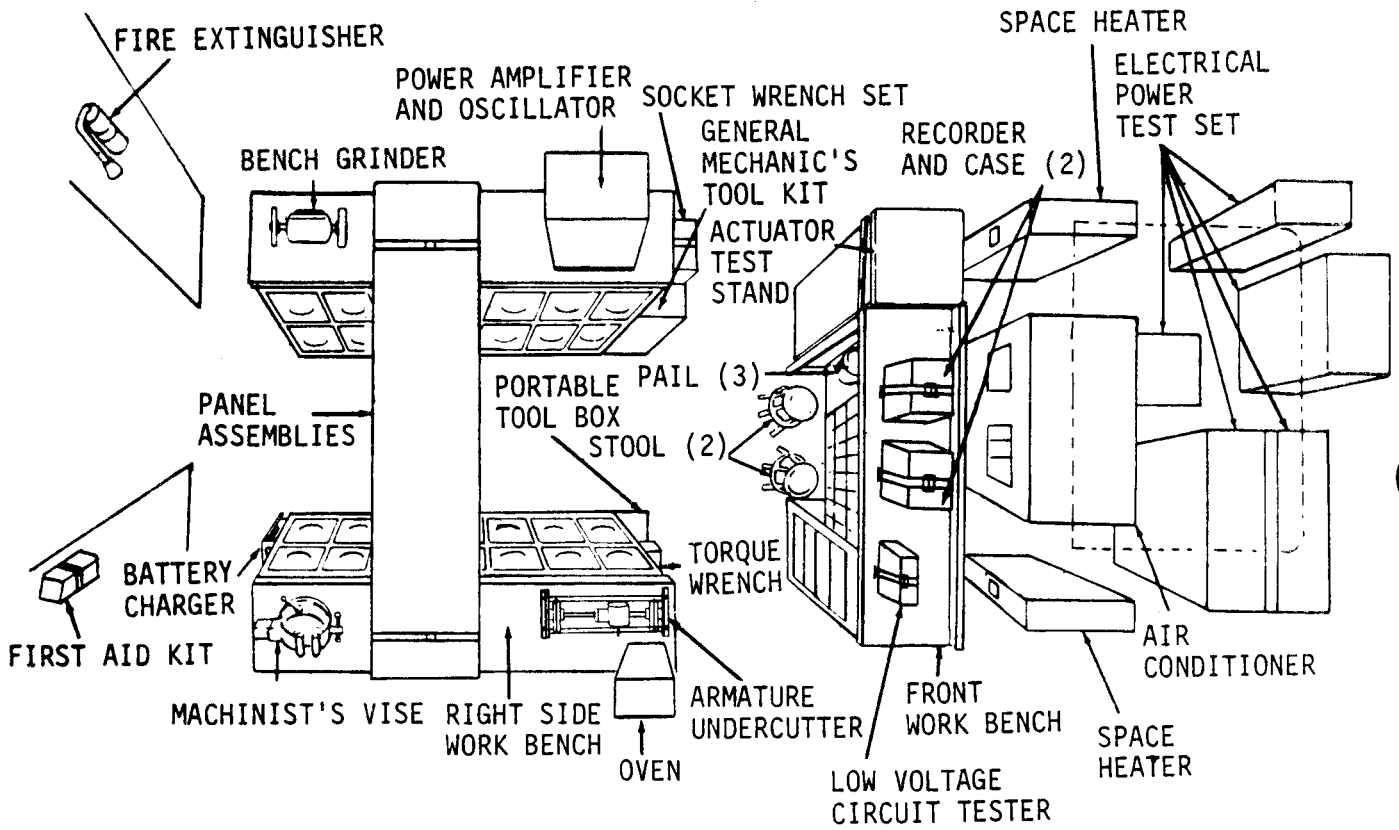


Figure 30. Contents Location Diagram.



## APPENDIX A REFERENCES

---

- |      |  |  |
|------|--|--|
| A-1. | <p style="text-align: center;">DICTIONARIES OF TERMS AND ABBREVIATIONS: POLICIES FOR MAINTENANCE OPERATIONS AND LIMITED STORAGE REQUIREMENTS</p> <p style="margin-left: 40px;">AR 310-25</p> <p style="margin-left: 40px;">AR 310-50</p> | <p style="margin-left: 40px;">Dictionary of United States Army Terms</p> <p style="margin-left: 40px;">Authorized Abbreviations and Brevity Codes</p>  |
| A-2. | <p style="text-align: center;">MAINTENANCE</p> <p style="margin-left: 40px;">MIL-M-38784</p> <p style="margin-left: 40px;">MIL STD 109</p> <p style="margin-left: 40px;">TM 9-2330-238-14&amp;P</p>                                      | <p style="margin-left: 40px;">Manuals, Technical: General Style and Format Requirements</p> <p style="margin-left: 40px;">Quality Assurance. Terms and Definitions.</p> <p style="margin-left: 40px;">Operator's Organizational, Direct Support and General Support Maintenance Manual (Including Repair Parts and Special Tools List)</p> |
| A-3. | <p style="text-align: center;">RADIO INTERFERENCE SUPPRESSION</p> <p style="margin-left: 40px;">FM 11-65</p>   | <p style="margin-left: 40px;">Radio interference Suppression</p>   |

A-4. SHIPMENT AND LIMITED STORAGE

TM 38-230-1;-2

Preservation, Packaging, and Packing of Military Supplies and Equipment

TM 740-90-1

Administrative Storage of Equipment

A-5. DESTRUCTION OF EQUIPMENT

TM 750-244-3

Procedures for Destruction of Equipment to Prevent Enemy Use

A-6. SUPPLY PUBLICATIONS

DMWR 9-4940-451

Depot Maintenance Work Requirement for Shop Equipment, Electrical Repair Semitrailer Mounted

SC 4940-95-CL-B05

Sets, Kits, and Outfits Components List Shop Equipment, Electrical Repair, Semitrailer Mounted

SC 4940-95-CL-B05-HR

Hand Receipt Catalog Covering Content of Sets, Kits, and Outfits, Components List Shop Equipment, Electrical Repair, Semitrailer Mounted

TM 9-4940-451-23P

Shop Equipment, Electrical Repair, Semitrailer: Mounted

A-7.	PREVENTIVE MAINTENANCE	
	TM 38-750	The Army Maintenance Management System (TAMMS)
A-8.	PUBLICATION INDEXES	
	DA Pam 108-1	Index of Army Motion Pictures, Film Strips, Slides, and Phono-Recordings
	DA Pam 310-1	Consolidated Index of Army Publications and Forms
	DA Pam 310-25	Foreign Military Sales Publications Guide
A-9.	LIST OF COMMERCIAL MANUALS	
	AMPLIFIER	250 VA, Model PA-250 AB & AC, Optimization, FSCM 23405.
	BRIDGE, UNIVERSAL, IMPEDANCE	Model 250 DE, FSCM 11837, NSN 6625-00-404-1592
	BRUSH, WIRE, ROTARY WHEEL	NSN 5130-00-277-9487
	BRUSH, WIRE, ROTARY WHEEL	NSN 5130-00-596-0673
	CHARGER, BATTERY	A & M Instrument Model 5190, FSCM 15309, NSN 6130-00-669-6659

A-10. LIST OF COMMERCIAL MANUALS  
(Continued)

CHARGER, BATTERY	General Support Maintenance Repair Parts and Special Tools Lists Including Depot Maintenance Repair Parts and Special Tools: PP-1660/G and PP-1660A/G, Number 11-6130-227-40P.
CLEANER, BLOWER AND VACUUM	Portable Industrial Type, Model MVU, FSCM 12835.
COMPONENT LOCATION LIST	Model SELR, Shop Equipment, Electrical Repair, Semitrailer, Mounted, NSN 4940-01-096-4475.
CRIMPING TOOL	CTM Die Type, Cat. No. 11707-1 FSCM 89020, NSN 5120-000-596-9313
CRIMPING TOOL	MH 750, FSCM 11851. NSN 5120-00-177-6963.
CUTTER, BOLT	0390 MA, Code No. 698130-03011, Angular Cut Tool, FSCM 77428.
DRILL, ELECTRIC PORTABLE	Cat. No. 1575, FSCM 07429, NSN 5130-00-142-5325.
FREQUENCY METER SET	TB 9-6625-1943-50 Calibration Procedure for Frequency Meter, PFM604B, NSN 6625-00-893-0021.
GRINDING MACHINE	Model E-7, P/N E7M, FSCM 95952.
HOIST, CHAIN	P/N 10RB53, FSCM 30760, NSN 3950-00-889-8728.
LEAD SET, TEST	P/N 11002A, FSCM 28480, NS 6625-00-079-1426.
MULTIMETER	And Vacuum Tube Volt Ohmmeter, Number 9-6625-990-35.
MULTIMETER	AN/URM-105C, Number 11-6625-203-24P-2, NSN 6625-00-999-6282.

A-10. LIST OF COMMERCIAL MANUALS  
(Continued)

MULTIMETER	Number 11-6625-203-12.
MULTIMETER	P/N 50-19041 IAAAA1, FSCM 29834, NSN 6625-00-284-0855.
MULTIMETER	TS-352 B/U, NUMBER 11-6625-366-15.
MULTIMETER	TS-352, B/U, NUMBER 11-6625-366-24P, NSN 6625-00-553-0142.
MULTIMETER, INTEGRATING	Digital, P/N 816903-100, FSCM 14506, NSN 6625-00-495-3513.
OHMMETER	Catalog Numbers 21159, 21259, 21259-47, 21359, 21359-47, FSCM 07239, NSN 6625-00-141-3558.
OSCILLATOR	Optimation, Models RCD-10 & RCD-10B, FSCM 23405.
OSCILLOSCOPE	305 DMM, FSCM 80009, NSN 6625-01-086-7005.
POWER SUPPLY	Model No. PVC50-2-E-TBC, FSCM 98380.
PULLER KIT	FSCM 55719, NSN 3120-00-089-3660.
RECORDER, PEN	Model PDRHXFHXVAA16 XT, NSN 6625-00-498-9984.
SOLDERING GUN	Model 450, P/N 450K4, FSCM 11103, NSN 3439-00-930-1638.
SOLDERING TIPS	P/N D440, FSCM 97049, NSN 3439-00-729-6770.
STRIPPER, CABLE	P/N TL583U, FSCM 80058, NSN 5110-00-238-7696.
TACHOMETER, PORTABLE	Electric, FSCM 80300.
TACHOMETER, STROBOSCOPIC	P/N 1531AB, FSCM 24655, NSN 6680-00-799-7616.

LIST OF COMMERCIAL MANUALS  
(Continued)

TECHNICAL MANUAL	Analyzer, Electrical Power, AC Portable, Model 5173, FSCM 15309, NSN 6625-00-624-4846.
TESTER	In-Circuit Semiconductor, Model 259C, FSCM 93346, NSN 6625-01- 086-9639.
TESTER, UNIVERSAL ANTIFREEZE	No. 566-TB, FSCM 88220, NSN 6630-00-247-2968.
TEST GAGE AND HOLE ASSEMBLY	For Hydraulic Governor, FSCM 09096.
TEST SET, ARMATURE	FSCM 11634, NSN 6625-00-238- 1460.
TEST SET, ARMATURE	Growlers, Types U-2, B-1, B-1-M, 1-X, and M-2.
TEST SET, ELECTRICAL	Number 5-6625-2591-13&P, NSN 6825-00-700-4368.
TEST SET, ELECTRICAL POWER	Avtron Model K237, NSN 6625- (Not Assigned).
TEST SET, LOW VOLTAGE CIRCUIT	Automotive Military Type, A & M Model 5192, FSCM 15309, NSN 4910- 00-092-9136.
TEST STAND ASSEMBLY	Rotary Actuator. Model No. BDL-812121-60 Hz, NSN 4940-00-152-
TRESTLE, HOIST, PORTABLE	FSCM 08136, NSN 3950-00-807-0671.
WRENCH, TORQUE	FSCM 08914, NSN 5120-00-221-7983.
WRENCH, TORQUE	FSCM 08914, NSN 5120-00-640-6364.
WRENCH, TORQUE	FSCM 08914, NSN 5120-00-821- 3441.

INDEX

	Paragraph	Page
Actuator test stand assembly .....	3-19	3-15
Administrative storage .....	1-3	1-1
Armature undercutter .....	3-16	3-13
Battery charger .....	3-3	3-2
Bench grinder .....	3-5	3-3
Bolt cutter.....	3-21	3-16
Broom .....	3-20	3-16
Crowbar .....	3-11	3-8
Data plates .....	3-29	3-34
Description .....	1-8	1-3
Destruction of army materiel to prevent enemy use .....	1-5	1-1
Electrical insulation sheets .....	3-9	3-8
Electrical power test sets .....	3-8	3-7
Equipment serviceability criteria (ESC).....	1-4	1-1
Fire Extinguisher and bracket.....	3-12	3-10
First aid kit .....	3-13	3-10
Front workbench.....	3-28	3-32
		3-8
General Mechanic's tool kit .....	3-10	3-26
Generator exhaust installation.....	3-25	3-8
Generator mounting hardware .....	3-9	3-8
Ground rod .....	3-11	3-19
Left and right side workbenches.....	3-23	3-36
Load centers and related components .....	3-31	3-3
		1-1
Machinist vise .....	3-4	1-1
Maintenance forms and records.....	1-2	3-12
Oven .....	3-15	3-8
Oven mounting hardware, .....	3-9	3-15
Panel assemblies .....	3-18	3-30
Panel stowage assembly.....	3-27	3-22
Platform assembly installation .....	3-24	3-18
Portable hoist trestle .....	3-22	3-8
Portable tool box .....	3-10	3-10
Power amplifier and oscillator.....	3-14	3-28
Power supply installation .....	3-26	
Quality Assurance/Quality Control (QA/QC) .....	1-6	1-1

	Paragraph	Page
Recorder .....	3-17	3-14
Repair parts .....	3-2	3-1
Reporting quality deficiency reports (QDR) .....	1-7	1-1
Scope .....	1-1	1-1
Small parts storage cabinet .....	3-7	3-6
Socket wrench set .....	3-10	3-8
Stools and pails .....	3-6	3-5
Tabulated data .....	1-8	1-3
Test set, low voltage circuit .....	3-17	3-14
Thread cutting tap set .....	3-9	3-8
Torque wrench .....	3-10	3-8
Upright broom .....	3-20	3-16
Utility grinding machine .....	3-5	3-3
Workbench .....	3-23	3-19
Wrecking bar .....	3-11	3-8



By Order of the Secretary of the Army:

Official:

E. C. MEYER  
*General, United States Army*  
*Chief of Staff*

ROBERT M. JOYCE  
*Brigadier General, United States Army*  
*The Adjutant General*

DISTRIBUTION:

To be distributed in accordance with Special List.



# SOMETHING WRONG WITH THIS PUBLICATION?



THEN . . . JOT DOWN THE DOPE ABOUT IT ON THIS FORM, CAREFULLY TEAR IT OUT, FOLD IT AND DROP IT IN THE MAIL!

FROM: (PRINT YOUR UNIT'S COMPLETE ADDRESS)

DATE SENT

PUBLICATION NUMBER

TM 9-4940-546-14&P

PUBLICATION DATE

17 Jun 82

PUBLICATION TITLE Shop Equipment,  
Electrical Repair Semitrailer  
Mounted

BE EXACT . . . PIN-POINT WHERE IT IS

IN THIS SPACE TELL WHAT IS WRONG AND WHAT SHOULD BE DONE ABOUT IT:

PAGE NO.

PARA-GRAPH

FIGURE NO.

TABLE NO.

TEAR ALONG PERFORATED LINE

PRINTED NAME, GRADE OR TITLE, AND TELEPHONE NUMBER

SIGN HERE:

FILL IN YOUR  
UNIT'S ADDRESS

FOLD BACK

DEPARTMENT OF THE ARMY

\_\_\_\_\_  
\_\_\_\_\_

OFFICIAL BUSINESS  
PENALTY FOR PRIVATE USE \$300

POSTAGE AND FEES PAID  
DEPARTMENT OF THE ARMY  
DOD 314



Commander  
US Army Armament Materiel Readiness Command  
ATTN: DRSAR-MAS  
Rock Island, IL 61299

TEAR ALONG PERFORATION LINE



THEN . . . JOT DOWN THE DOPE ABOUT IT ON THIS FORM, CAREFULLY TEAR IT OUT, FOLD IT AND DROP IT IN THE MAIL!

# SOMETHING WRONG WITH THIS PUBLICATION?

FROM: (PRINT YOUR UNIT'S COMPLETE ADDRESS)

DATE SENT

PUBLICATION NUMBER

TM 9-4940-546-14&P

PUBLICATION DATE

17 Jun 82

PUBLICATION TITLE Shop Equipment,  
Electrical Repair Semitrailer  
Mounted

BE EXACT . . . PIN-POINT WHERE IT IS

PAGE NO.	PARA-GRAPH	FIGURE NO.	TABLE NO.
----------	------------	------------	-----------

IN THIS SPACE TELL WHAT IS WRONG AND WHAT SHOULD BE DONE ABOUT IT:

PRINTED NAME, GRADE OR TITLE, AND TELEPHONE NUMBER

SIGN HERE:

TEAR ALONG PERFORATED LINE

FILL IN YOUR  
UNIT'S ADDRESS

FOLD BACK

DEPARTMENT OF THE ARMY

\_\_\_\_\_  
\_\_\_\_\_

OFFICIAL BUSINESS  
PENALTY FOR PRIVATE USE \$300

POSTAGE AND FEES PAID  
DEPARTMENT OF THE ARMY  
DOD 314



Commander  
US Army Armament Materiel Readiness Command  
ATTN: DRSAR-MAS  
Rock Island, IL 61299

TEAR ALONG PERFORATED LINE

**SOMETHING WRONG WITH THIS PUBLICATION?**



THEN . . . JOT DOWN THE DOPE ABOUT IT ON THIS FORM, CAREFULLY TEAR IT OUT, FOLD IT AND DROP IT IN THE MAIL!

FROM: (PRINT YOUR UNIT'S COMPLETE ADDRESS)

DATE SENT

PUBLICATION NUMBER  
TM 9-4940-546-14&P

PUBLICATION DATE  
17 Jun 82

PUBLICATION TITLE Shop Equipment,  
Electrical Repair Semitrailer  
Mounted

BE EXACT . . . PIN-POINT WHERE IT IS

IN THIS SPACE TELL WHAT IS WRONG AND WHAT SHOULD BE DONE ABOUT IT:

PAGE NO.	PARA-GRAPH	FIGURE NO.	TABLE NO.

(Large empty space for describing the error and recommended changes.)

PRINTED NAME, GRADE OR TITLE, AND TELEPHONE NUMBER

SIGN HERE:

ALONG PERFORATED LINE

FILL IN YOUR  
UNIT'S ADDRESS

FOLD BACK

DEPARTMENT OF THE ARMY

\_\_\_\_\_  
\_\_\_\_\_

OFFICIAL BUSINESS  
PENALTY FOR PRIVATE USE \$300

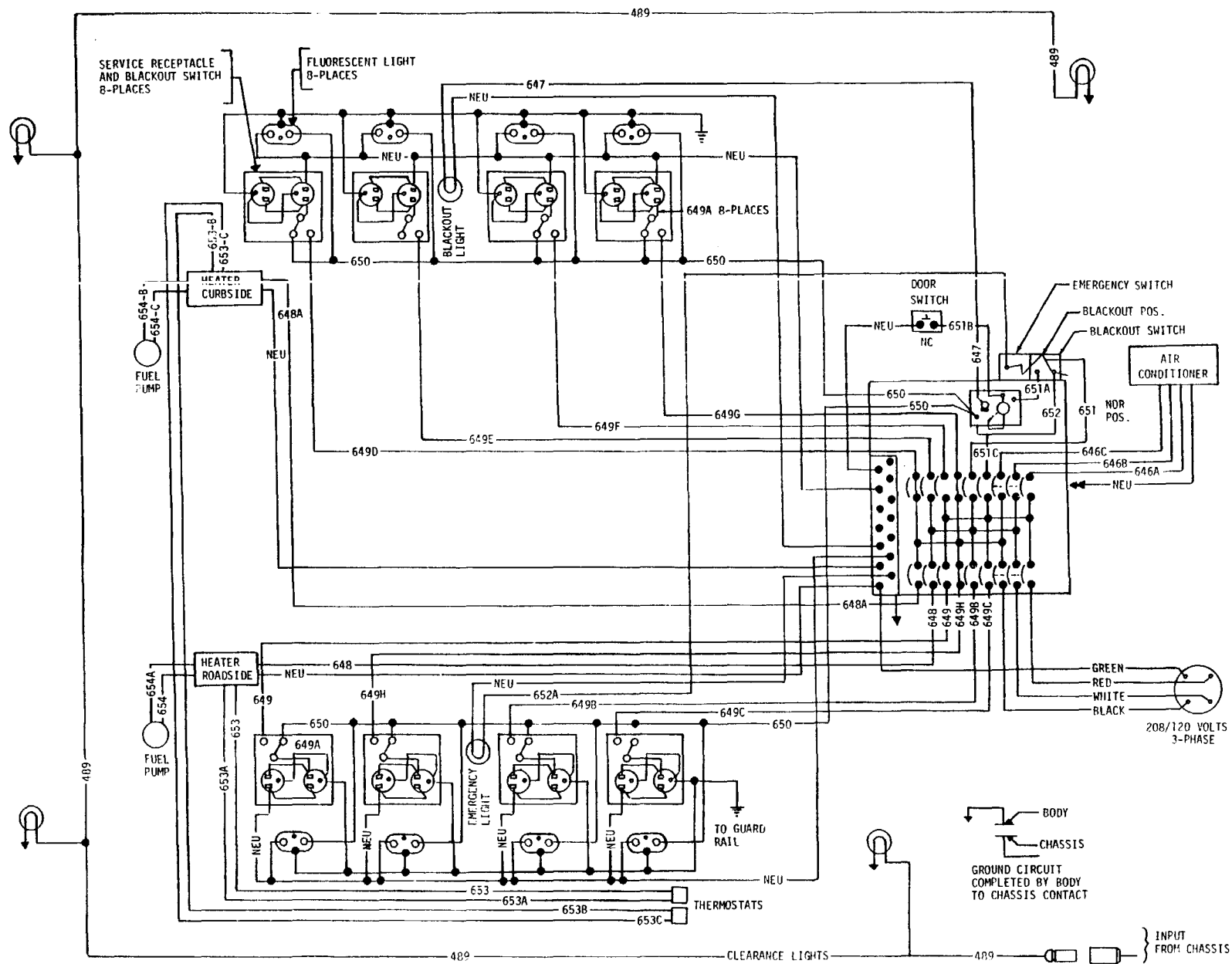
POSTAGE AND FEES PAID  
DEPARTMENT OF THE ARMY  
DOD 314



Commander  
US Army Armament Materiel Readiness Command  
ATTN: DRSAR-MAS  
Rock Island, IL 61299

TEAR ALONG PERFORATED LINE





LEGEND	
CIRCUIT NO.	CIRCUIT NAME
489	SERVICE CLEARANCE
647	MAIN PANEL TO BLACKOUT LIGHT
648	MAIN PANEL TO LEFT HEATER
648A	MAIN PANEL TO RIGHT HEATER
649	MAIN PANEL TO RECEPTACLES
649A	3 WAY SWITCH TO RECEPTACLES
650	RELAY SWITCH TO LIGHT FIX. & RECEPT.
651	MAIN PANEL TO BLACKOUT SWITCH
651A	BLACKOUT SWITCH TO RELAY
651B	RELAY TO REAR DOOR SWITCH
651C	MAIN PANEL TO RELAY
652	RELAY TO BLACKOUT SWITCH
652A	EMER. LIGHT SWITCH TO EMER. LIGHT
653	LEFT HEATER TO THERMOSTAT
653A	LEFT HEATER TO THERMOSTAT
653B	RIGHT HEATER TO THERMOSTAT
653C	RIGHT HEATER TO THERMOSTAT
654	LEFT HEATER TO LEFT PUMP
654A	LEFT HEATER TO LEFT PUMP
654B	RIGHT HEATER TO RIGHT PUMP
654C	RIGHT HEATER TO RIGHT PUMP

WIRING DIAGRAM

Figure 2. Wiring Diagram.

## THE METRIC SYSTEM AND EQUIVALENTS

### LINEAR MEASURE

1 Centimeter = 10 Millimeters = 0.01 Meters = 0.3937 Inches  
 1 Meter = 100 Centimeters = 1000 Millimeters = 39.37 Inches  
 1 Kilometer = 1000 Meters = 0.621 Miles

### SQUARE MEASURE

1 Sq Centimeter = 100 Sq Millimeters = 0.155 Sq Inches  
 1 Sq Meter = 10,000 Sq Centimeters = 10.76 Sq Feet  
 1 Sq Kilometer = 1,000,000 Sq Meters = 0.386 Sq Miles

### WEIGHTS

1 Gram = 0.001 Kilograms = 1000 Milligrams = 0.035 Ounces  
 1 Kilogram = 1000 Grams = 2.2 Lb  
 1 Metric Ton = 1000 Kilograms = 1 Megagram = 1.1 Short Tons

### CUBIC MEASURE

1 Cu Centimeter = 1000 Cu Millimeters = 0.06 Cu Inches  
 1 Cu Meter = 1,000,000 Cu Centimeters = 35.31 Cu Feet

### LIQUID MEASURE

1 Milliliter = 0.001 Liters = 0.0338 Fluid Ounces  
 1 Liter = 1000 Milliliters = 33.82 Fluid Ounces

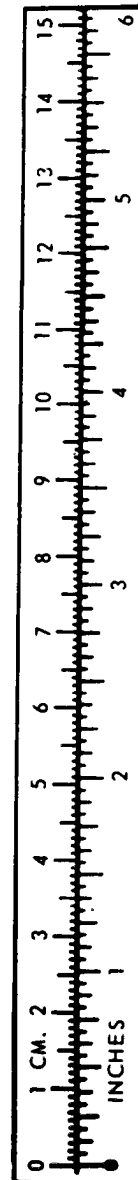
### TEMPERATURE

$5/9 (^{\circ}\text{F} - 32) = ^{\circ}\text{C}$   
 212<sup>o</sup> Fahrenheit is equivalent to 100<sup>o</sup> Celsius  
 90<sup>o</sup> Fahrenheit is equivalent to 32.2<sup>o</sup> Celsius  
 32<sup>o</sup> Fahrenheit is equivalent to 0<sup>o</sup> Celsius  
 $9/5 \text{ C}^{\circ} + 32 = \text{F}^{\circ}$

### APPROXIMATE CONVERSION FACTORS

<u>TO CHANGE</u>	<u>TO</u>	<u>MULTIPLY BY</u>
Inches . . . . .	Centimeters . . . . .	2.540
Feet . . . . .	Meters . . . . .	0.305
Yards . . . . .	Meters . . . . .	0.914
Miles . . . . .	Kilometers . . . . .	1.609
Square Inches . . . . .	Square Centimeters . . . . .	6.451
Square Feet . . . . .	Square Meters . . . . .	0.093
Square Yards . . . . .	Square Meters . . . . .	0.836
Square Miles . . . . .	Square Kilometers . . . . .	2.590
Acres . . . . .	Square Hectometers . . . . .	0.405
Cubic Feet . . . . .	Cubic Meters . . . . .	0.028
Cubic Yards . . . . .	Cubic Meters . . . . .	0.765
Fluid Ounces . . . . .	Milliliters . . . . .	29.573
Pints . . . . .	Liters . . . . .	0.473
Quarts . . . . .	Liters . . . . .	0.946
Gallons . . . . .	Liters . . . . .	3.785
Ounces . . . . .	Grams . . . . .	28.349
Pounds . . . . .	Kilograms . . . . .	0.454
Short Tons . . . . .	Metric Tons . . . . .	0.907
Pound-Feet . . . . .	Newton-Meters . . . . .	1.356
Pounds per Square Inch . . . . .	Kilopascals . . . . .	6.895
Miles per Gallon . . . . .	Kilometers per Liter . . . . .	0.425
Miles per Hour . . . . .	Kilometers per Hour . . . . .	1.609

<u>TO CHANGE</u>	<u>TO</u>	<u>MULTIPLY BY</u>
Centimeters . . . . .	Inches . . . . .	0.394
Meters . . . . .	Feet . . . . .	3.280
Meters . . . . .	Yards . . . . .	1.094
Kilometers . . . . .	Miles . . . . .	0.621
Square Centimeters . . . . .	Square Inches . . . . .	0.155
Square Meters . . . . .	Square Feet . . . . .	10.764
Square Meters . . . . .	Square Yards . . . . .	1.196
Square Kilometers . . . . .	Square Miles . . . . .	0.386
Square Hectometers . . . . .	Acres . . . . .	2.471
Cubic Meters . . . . .	Cubic Feet . . . . .	35.315
Cubic Meters . . . . .	Cubic Yards . . . . .	1.308
Milliliters . . . . .	Fluid Ounces . . . . .	0.034
Liters . . . . .	Pints . . . . .	2.113
Liters . . . . .	Quarts . . . . .	1.057
Liters . . . . .	Gallons . . . . .	0.264
Grams . . . . .	Ounces . . . . .	0.035
Kilograms . . . . .	Pounds . . . . .	2.205
Metric Tons . . . . .	Short Tons . . . . .	1.102
Newton-Meters . . . . .	Pound-Feet . . . . .	0.738
Kilopascals . . . . .	Pounds per Square Inch . . . . .	0.145
Kilometers per Liter . . . . .	Miles per Gallon . . . . .	2.354
Kilometers per Hour . . . . .	Miles per Hour . . . . .	0.621



TA089991

IM 9-4940-540-14&P M JUNE 1962

